



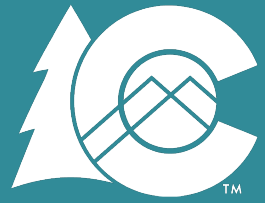
OeHI

Office of eHealth Innovation

EHEALTH COMMISSION MEETING

VIRTUAL CONFERENCE

September 13, 2023



OeHI

Office of eHealth Innovation

NOTE:

NEW ZOOM WEBINAR LINK

DIAL IN BY PHONE:

US: +1 719 359 4580

OR: +1 669 900 6833

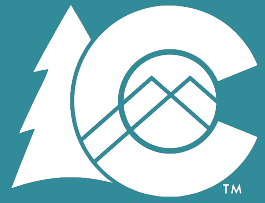
WEBINAR ID: 834 3429 8716

IF YOU ARE EXPERIENCING AUDIO OR PRESENTATION DIFFICULTIES DURING THIS MEETING,

PLEASE TEXT ISSUES TO

Amanda Malloy: 440-796-8957

<div> <div>September Agenda</div> <div>  <div> <div>OeHI</div> <div>Office of eHealth Innovation</div> </div> </div> </div>		
Title	Start	Duration
<div>Call to Order</div> <ul style="list-style-type: none"> Roll Call and Introductions Approval of July Meeting Minutes September Agenda and Objectives <div>Kaakpema “KP” Yelpaala, Chair</div>	12:00	5 mins
<div>Announcements</div> <ul style="list-style-type: none"> Lt. Governor Primavera Remarks OeHI Updates-eHealth Commission Updates Decision Items & Action Items <div> Dianne Primavera, Lt. Governor and Director of the Office of Saving People Money on Health Care Stephanie Pugliese, Director, Office of eHealth Innovation (OeHI) eHealth Commission Members </div>	12:05	10 mins
<div>Innovation Spotlight: Violet</div> <div>Gaurang Choksi, Founder and CEO</div> <div>Kay Nikiforova, Clinical and Research</div>	12:15	45 mins
<div>Social Health Information Exchange Procurement Update</div> <div>Stephanie Pugliese, Director, OeHI</div> <div>Gabby Burke, Senior Project Manager, OeHI</div> <div>Toni Baruti, eHealth Commission Sponsor</div>	1:00	45 mins
Public Comment Period	1:45	5 mins
<div>eHealth Commission Meeting Closing Remarks</div> <ul style="list-style-type: none"> Open Discussion Recap Action Items Future Agenda Items Adjourn Public Meeting <div>Kaakpema “KP” Yelpaala, Chair</div>	1:50	10 mins



OeHI

Office of eHealth Innovation

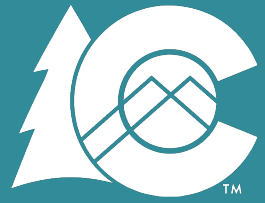
Opening Remarks

*Dianne Primavera, Lt. Governor and
Director of the Office of Saving People
Money on Health Care*

OeHI and eHealth Commission Updates

- OeHI Team Updates
- Commissioner Updates?

Note: If you are experiencing audio or presentation difficulties during this meeting, please text 440-796-8957



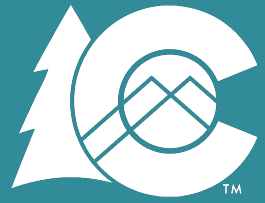
OeHI

Office of eHealth Innovation

Innovation Spotlight: Violet

Gaurang Choksi, Founder and CEO

Kay Nikiforova, Clinical and Research



OeHI

Office of eHealth Innovation

Social Health Information Exchange Procurement Update

Stephanie Pugliese, Director, OeHI

Gabby Burke, Senior Project Manager, OeHI

Toni Baruti, eHealth Commission Sponsor

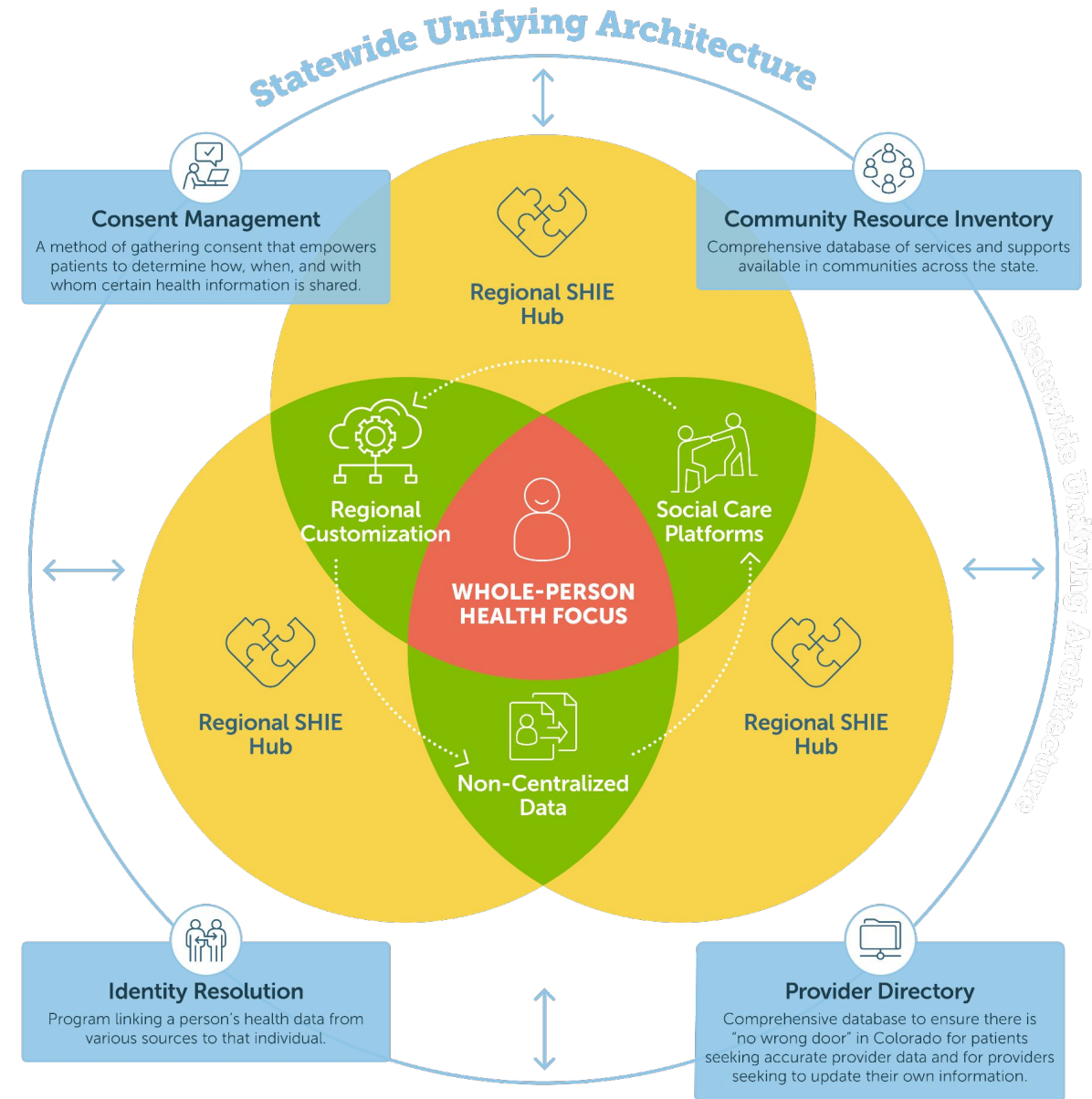
Two-Pronged Approach:

Statewide Unifying Architecture

- Build a network with a focus on interoperability and data governance, built upon existing regional successes

Regional SHIE Hubs

- Fund regional infrastructure and partnerships that are customizable to the priorities of the region



How will the SHIE work?



SHIE-Coordinated Journey

ENROLLMENT & SCREENING



Vanessa enrolls in Medicaid and is automatically assigned to Caroline



**VANESSA'S INITIAL SOCIAL
NEEDS SCREENING**



**CAROLINE REVIEWS
VANESSA'S SCREENING**

ASSESSMENT & PLANNING



**CAROLINE ASSESSES
VANESSA'S PRIMARY NEEDS**



Need: Technology Assistance
Need: Food
Need: Broadband



CONSENT TO SHARE DATA

Vanessa consents to share her social and health information with most of her providers, and restricts her SUD data to her SUD care team.



CREATE CARE PLAN



USE SHIE REFERRAL PORTAL

to identify services that meet Vanessa's medical, social, financial, and insurance needs

REFERRALS TO SERVICES

Referral
.....>



PHYSICAL HEALTH

Service: Primary Care Doctor

Referral
.....>



BEHAVIORAL HEALTH

Service: Teletherapy
Service: SUD Treatment

Referral
.....>



SOCIAL HEALTH

Service: Digital Navigator Program
Service: Food Bank
Service: Affordable Connectivity Program



REGULAR CLIENT CHECK-INS

to ensure needs are being met

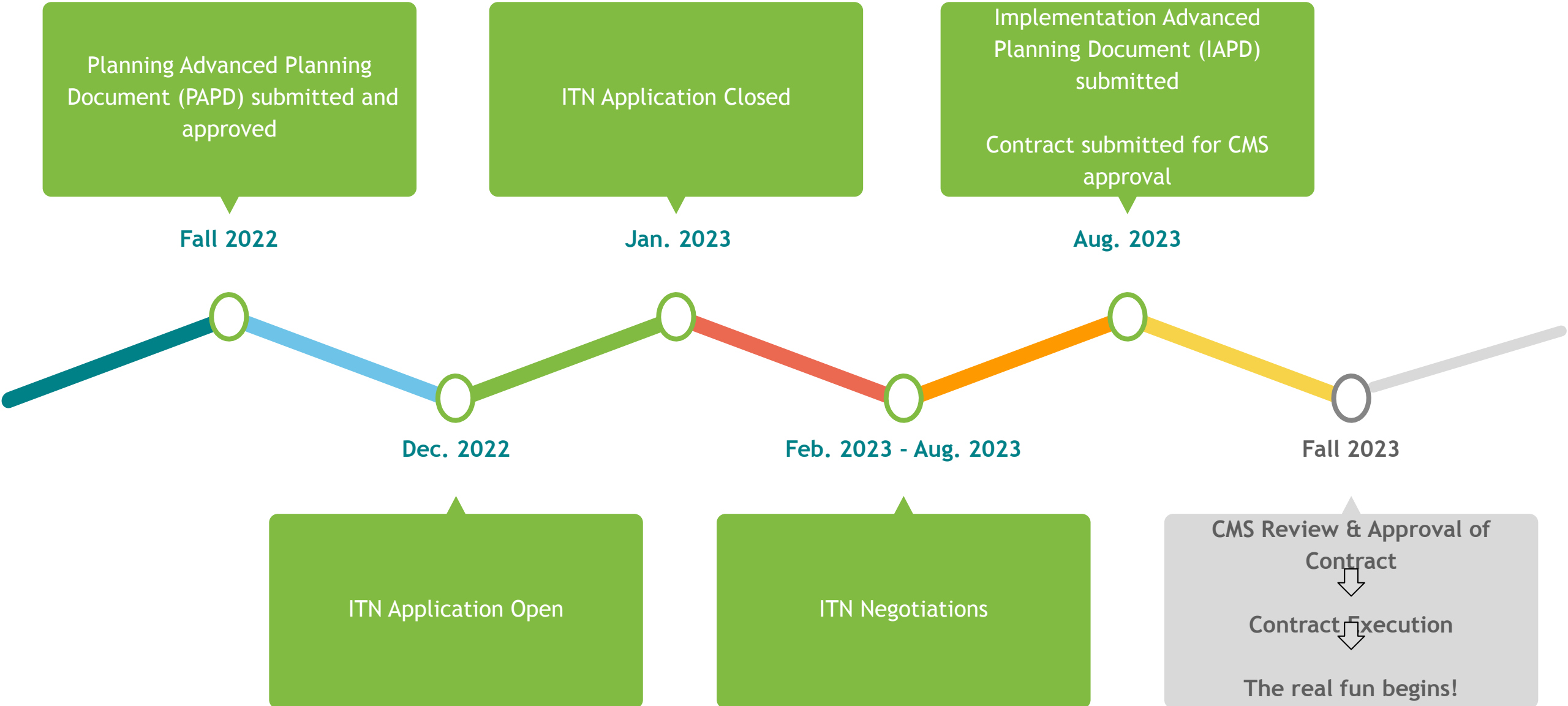
**REGULAR SERVICE
PROVIDER CHECK-INS**

to ensure needs are being met

SYSTEM-LEVEL IMPACT

Improved access to health services • Increased affordability of services • Increased equity

Process Review



The background of the slide is white and filled with numerous small, colorful triangles of various sizes and colors, including red, green, blue, yellow, and purple, scattered across the entire area.

Resultant

The ITN Process was a massive statewide effort!

3 phases

24

60+

70+

15 months

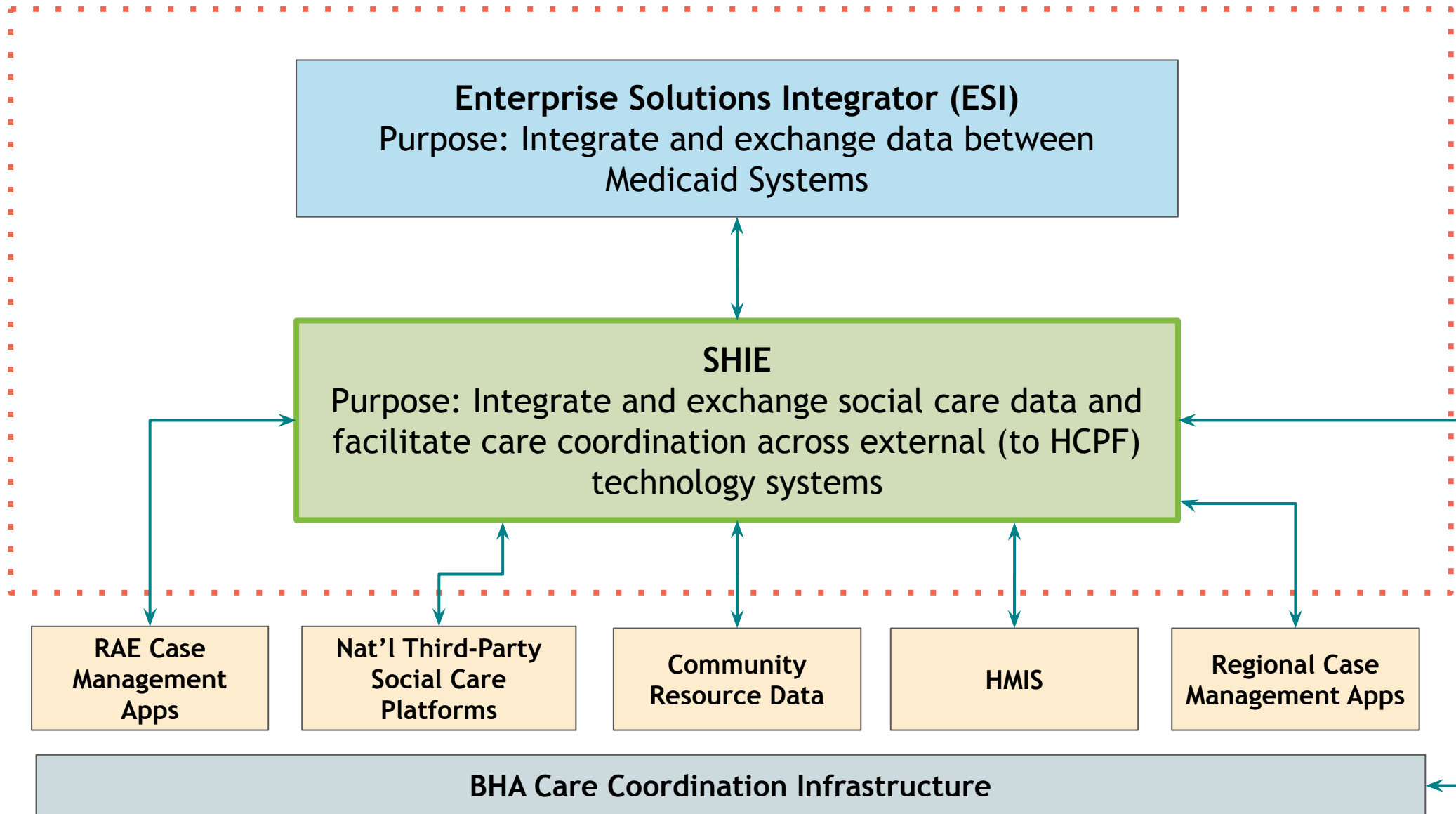
Care
Coordination
Workgroup
members

SMEs
from OIT, CDPHE,
HCPF, BHA, CDHS,
Governor's
Office, & eHealth
Commission

Meetings
(both internal
and external
negotiations)

4 program
consultations

SHIE Architecture: Phase 1



Interoperability Layer

Purpose: Connect third-party applications and data systems to SHIE

Goals: Secure, flexible Open-Source API development to connect approved third-party applications to SHIE, following governance rules

API Sandbox

SHIE Developer Portal

SHIE Interoperability Layer (API Gateway)

Data Normalization Layer

Purpose: Provide a landing pool for data normalization/standardization activities

Goals: Facilitate data exchange, identity resolution, rules/decision supports, and consent management; provide a “portal of last resort”

SHIE Data Lake

Consent PoC

SHIE Portal

- **OeHI's community goals remain the same**
 - Build on existing community networks → Meet communities where they are
 - Develop and maintain an equity-focused, person-first governance strategy
 - Drive SHIE development through Coloradans' needs
- **Not procured through the ITN**
 - Currently working with procurement to identify efficient procurement mechanism
- **Not anticipating impact to implementation timeline**

- Contract kick off
- Product Roadmap, Project Plan, Implementation
- Community-Driven Infrastructure opportunities and partnerships
- **Website** (Resources, FAQs, User Journeys, & More!) -
<https://oehi.colorado.gov/SHIE>
- **SHIE Bulletin Sign Up** -
<https://forms.gle/ivD8Tr7GKR7Qzcw49>

The SHIE Bulletin

Working Together Towards
Whole Person Health

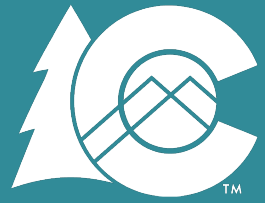




OeHI

Office of eHealth Innovation

PUBLIC COMMENT PERIOD



OeHI

Office of eHealth Innovation

CLOSING REMARKS