



OeHI

Office of eHealth Innovation

EHEALTH COMMISSION MEETING

FEBRUARY 12, 2019



OeHI

Office of eHealth Innovation

NOTE:

**IF YOU ARE EXPERIENCING AUDIO OR
PRESENTATION DIFFICULTIES DURING
THIS MEETING, PLEASE TEXT ISSUES TO**

720-545-7779

FEBRUARY AGENDA

Call to Order	
<ul style="list-style-type: none"> Roll Call and Introductions Approval of January Minutes February Agenda and Objectives <i>Jason Greer, Co-Chair</i>	12:00
Announcements	
<ul style="list-style-type: none"> OeHI Announcements and Updates Workgroup Announcements and Updates Commissioner Announcements and Updates <i>Carrie Paykoc, Director, OeHI</i> <i>eHealth Commissioners</i>	12:10
New Business	
National and State Priorities-Roadmap Steering Discussion Cont. <i>Carrie Paykoc, Director, Office of eHealth Innovation</i> <i>Chris Wells, Colorado Department of Public Health and Environment</i> <i>Perry May, Deputy Executive Director of Health Facilities, Colorado Department of Human Services</i>	12:30
Colorado's Health IT Roadmap Update- eHealth Commission Review/Approval <i>Carrie Paykoc, Director, Office of eHealth Innovation</i> <i>Jason Greer, CTO, Quality Health Network, Co-Chair eHealth Commission</i>	1:00
Colorado Health Observation Regional Data Service (CHORDS) <i>Paul Presken, Senior Consultant, Colorado Health Initiatives</i> <i>Dr. Bill Burman, Executive Director, Denver Public Health</i>	1:20
Public Comment Period	
<ul style="list-style-type: none"> Open Discussion 	1:50
Closing Remarks	
<ul style="list-style-type: none"> Recap Action Items March 2020 Agenda Adjourn <i>Jason Greer, Co-Chair</i>	1:55

- Welcome New & Renewed eHealth Commissioners
 - Perry May, CDHS designee
 - Alex Pettit, OIT designee
 - David Mok-Lamme, health insurance rep
 - Chris Wells, CDHPHE designee- term renewed
- Ann Boyer, term expired and to serve until consumer rep appointed. Thank you Ann for your Service!

Note: If you are experiencing audio or presentation difficulties during this meeting, please text 720-545-7779.

OeHI UPDATES

- Projects and Funding Strategy
 - See slides and handouts
- Office of the National Coordinator (ONC) Strategy-
 - Comment Period till 3/18
- March Meeting- Remote Only, hosted at HIMSS Conference
 - Annual eHealth Commission Training
 - Consumer Engagement RFI Overview
- April Meeting
 - Update on Advance HIE Projects

COMMISSION UPDATES

Note: If you are experiencing audio or presentation difficulties during this meeting, please text 720-545-7779.

PROJECT STATUS



Active Project Dashboard

Project Name	Project Phase	Overall Status	Schedule Status	Scope Status	Budget Status	Policy Status	Start Date	End Date	% Complete	Planned Budget	Actual to Date	Remaining Budget	% Spent	5-Year Plan (Y/N)
Agency / Division: OeHI - Governor's Office of eHealth Innovation														
OeHI - MDM Individual Identity	Intake	➡	➡	➡	➡	➡	3/21/19	9/30/19	50%	\$4,877,384	\$2,822,084	\$2,055,300	58%	--
OeHI - MDM Provider Identity	Initiate	➡	➡	➡	➡	➡	3/21/19	10/31/19	10%	\$100,000	\$62,500	\$37,500	63%	Yes
OeHI - Automated and Integrated Consent	Plan	➡	➡	➡	➡	➡	11/1/17	9/30/22	5%	\$2,900,000	\$38,889	\$2,861,111	1%	Yes
OeHI - Care Coordination	Plan	➡	➡	➡	➡	➡	11/1/17	9/30/22	10%	\$4,450,000	\$63,889	\$4,386,111	1%	Yes
OeHI - Consumer Engagement	Plan	➡	➡	➡	➡	➡	11/1/17	9/30/22	10%	\$2,650,000	\$164,500	\$2,485,500	6%	Yes
OeHI - HIE PDMP	Plan	➡	➡	➡	➡	➡	4/2/19	9/30/22	10%	\$224,500	\$38,889	\$185,611	17%	Yes
OeHI - Systems Integrator	Plan	➡	➡	➡	➡	➡	1/1/17	9/30/22	30%	\$2,100,000	\$38,889	\$2,061,111	2%	Yes
OeHI - Telehealth/Broadband	Plan	➡	➡	➡	➡	➡	9/5/19	6/30/22	0%	\$50,000	\$38,889	\$11,111	78%	Yes
OeHI - Advance HIE Rollup	Execute	➡	➡	➡	➡	➡	1/1/17	9/30/22	15%	\$3,750,000	\$982,889	\$2,767,111	26%	Yes
OeHI - Data Governance	Execute	➡	➡	➡	➡	➡	11/1/17	9/30/22	40%	\$6,300,000	\$652,789	\$5,647,211	10%	Yes
OeHI - General Operating Budget	Execute						7/1/19	9/30/21	9%	\$441,195	\$41,697	\$399,498	9%	Yes
OeHI - PMO	Execute	➡	➡	➡	➡	➡	6/1/19	9/30/22	80%	\$2,690,000	\$408,762	\$2,281,238	15%	Yes
OeHI - eCQM	Execute	➡	➡	➡	➡	➡	1/1/17	9/30/22	30%	\$6,283,333	\$479,889	\$5,803,444	8%	Yes
Total Projects for OeHI - Governor's Office of eHealth Innovation: 13									Agency Total:	\$36,816,412	\$5,834,555	\$30,981,857		

CAPITAL IT BUDGET



Initiative	Roadmap - Capital			
	FY 2018-19	FY 2019-20	FY 2020-21	FY 2021-22
Budget	\$6,605,000	\$11,408,333	\$4,450,000	\$0
Obligated	\$4,351,290	\$3,755,984	\$2,250,000	\$0
Remaining	\$2,253,710	\$7,652,349	\$2,200,000	\$0

Budget

Initiative	Roadmap - Capital			
	FY 2018-19	FY 2019-20	FY 2020-21	FY 2021-22
eCQM Reporting Tools and Registry	\$500,000	\$4,883,333	\$0	\$0
Health IT Portfolio Management	\$500,000	\$0	\$0	\$0
Master Data Management (MPI/MPD)	\$1,330,000	\$1,500,000	\$0	\$0
Data Governance Tools and Processes	\$500,000	\$1,000,000	\$2,200,000	\$0
Automated and Integrated Consent	\$250,000	\$1,000,000	\$750,000	\$0
Colorado Consumer Health Portal	\$1,350,000	\$0	\$0	\$0
Advancing Colorado's State HIE Infrastructure	\$1,125,000	\$1,125,000	\$0	\$0
Technology Infrastructure for Care Coordination	\$550,000	\$1,500,000	\$1,500,000	\$0
Systems Integrator	\$500,000	\$400,000	\$0	\$0
Total	\$6,605,000	\$11,408,333	\$4,450,000	\$0

Obligations

Initiative	Roadmap - Capital			
	FY 2018-19	FY 2019-20	FY 2020-21	FY 2021-22
eCQM Reporting Tools and Registry	\$403,290	\$0	\$0	\$0
Health IT Portfolio Management	\$500,000	\$0	\$0	\$0
Master Data Management (MPI/MPD)	\$1,330,000	\$1,492,084	\$0	\$0
Data Governance Tools and Processes	\$500,000	\$313,900	\$0	\$0
Automated and Integrated Consent	\$0	\$450,000	\$750,000	\$0
Colorado Consumer Health Portal	\$149,000	\$0	\$0	\$0
Advancing Colorado's State HIE Infrastructure	\$944,000	\$0	\$0	\$0
Technology Infrastructure for Care Coordination	\$525,000	\$1,500,000	\$1,500,000	\$0
Systems Integrator	\$0	\$0	\$0	\$0
Total	\$4,351,290	\$3,755,984	\$2,250,000	\$0

OPERATION BUDGET



Funding Summary

Initiative	Roadmap - Operating			
	FY 2018-19	FY 2019-20	FY 2020-21	FY 2021-22
Budget	\$0	\$1,500,000	\$5,993,692	\$5,993,692
Obligated	\$0	\$903,052	\$747,291	\$769,566
Remaining	\$0	\$596,948	\$5,246,401	\$5,224,126

Budget

Initiative	Roadmap - Operating			
	FY 2018-19	FY 2019-20	FY 2020-21	FY 2021-22
eCQM Reporting Tools and Registry	\$0	\$0	\$675,000	\$675,000
Health IT Portfolio Management	\$0	\$500,000	\$930,000	\$930,000
Master Data Management (MPI/MPD)	\$0	\$0	\$763,692	\$763,692
Data Governance Tools and Processes	\$0	\$0	\$1,300,000	\$1,300,000
Automated and Integrated Consent	\$0	\$0	\$450,000	\$450,000
Colorado Consumer Health Portal	\$0	\$200,000	\$525,000	\$525,000
Advancing Colorado's State HIE Infrastructure	\$0	\$500,000	\$500,000	\$500,000
Technology Infrastructure for Care Coordination	\$0	\$0	\$450,000	\$450,000
Systems Integrator	\$0	\$300,000	\$400,000	\$400,000
Total	\$0	\$1,500,000	\$5,993,692	\$5,993,692

Obligations

Initiative	Roadmap - Operating			
	FY 2018-19	FY 2019-20	FY 2020-21	FY 2021-22
eCQM Reporting Tools and Registry	\$0	\$0	\$0	\$0
Health IT Portfolio Management	\$0	\$312,052	\$177,291	\$169,566
Master Data Management (MPI/MPD)	\$0	\$0	\$570,000	\$600,000
Data Governance Tools and Processes	\$0	\$0	\$0	\$0
Automated and Integrated Consent	\$0	\$0	\$0	\$0
Colorado Consumer Health Portal	\$0	\$0	\$0	\$0
Advancing Colorado's State HIE Infrastructure	\$0	\$441,000	\$0	\$0
Technology Infrastructure for Care Coordination	\$0	\$0	\$0	\$0
Systems Integrator	\$0	\$150,000	\$0	\$0
Total	\$0	\$903,052	\$747,291	\$769,566

ACTION ITEMS

CO Health IT Roadmap	Follow Up	Status
Project Management Office	Current Spend on Initiatives	Included in Slides
eHealth Commissioner Openings	Accepting applications to fill open roles	-Welcome new eHealth Commissioners! -consumer role needed
Launching Consent Initiative Efforts	Wes Williams and Sarah Nelson to chair workgroup	<ul style="list-style-type: none">Planning meeting scheduled for Dec 13th to discuss approach and next steps

AFFORDABILITY ROADMAP

Affordability Roadmap	Status and Follow-Up
Prescriber Rx Tool	<ul style="list-style-type: none"> • OeHI participating in procurement process as subject matter experts • OeHI meeting on regular basis with Tom Leahy on project details • OeHI added criteria to SUPPORT ACT funding request to support provider adoption and reduce burden related to ALL prescription tools and support the integration of the tool/data. Funding request submitted to CMS. 60 day mark is mid- February.
Advanced Directive <u>SB 19-073</u>	<ul style="list-style-type: none"> • Align/Prioritize Roadmap Initiatives- consent, identity, HIE • Project kicked off Aug 2nd with regular meetings set up • Alignment and technical mapping sessions in September • Chris Wells leading effort • Survey released in November to inform requirements • Mapping out efforts with MyColorado, HIEs, and CDPHE
Interoperability (JAI)	<ul style="list-style-type: none"> • Align/Prioritize Roadmap Initiatives- Identity resolution in review by OIT, advance HIE projects kicking off for phase 1, scoping phase 2 • Boulder County Connect and Care Resource Network accepted as projects • Marc Lassaux and Carrie Paykoc serving on leadership committee • Carrie on Program and Policy Workgroup launched in January
Broadband/Telehealth	<ul style="list-style-type: none"> • Submitted letter of support and comments August 29th for connected care pilot funding opportunity • Launched workgroup on November 01, 2019. Goal to develop state plans for policy and funding by June 2020. • Chaired by Rachel Dixon, eHealth Commissioner, President of Prime Health • Meetings with American Telehealth Association, CHI, and CRHC in Feb.



OeHI

Office of eHealth Innovation

NATIONAL AND STATE PRIORITIES-ROADMAP STEERING DISCUSSION CONT.

CARRIE PAYKOC, DIRECTOR, OEHI

*CHRIS WELLS, DIRECTOR CENTER FOR HEALTH AND
ENVIRONMENTAL DATA, CDPHE*

*PERRY MAY, DEPUTY EXECUTIVE DIRECTOR OF HEALTH
FACILITIES, CDHS*



COLORADO
Department of Public
Health & Environment

CDPHE 2019-20 Strategic Plan

Overview

CDPHE Vision and Mission



COLORADO
**Department of Public
Health & Environment**

Mission

Advancing Colorado's health and protecting the places we live, learn, work, and play.

Vision

A healthy and sustainable Colorado where current and future generations thrive.



Statewide Key Issues



COLORADO
Governor Jared Polis

Key Issues



Economy

Foster an economy that works for everyone



Environment and Renewables

Move to renewable resources and protect the environment



Health

Save Coloradans money on healthcare



Education

Fulfill every child's potential regardless of their zipcode





Air Quality



Immunizations



Emergency
Preparedness
and Response



Healthy Eating
Active Living



Suicide
Prevention



Operational
Excellence



WIG - Wildly Important Goals

Air Quality (1 of 2)



WIG 1: Reduce Greenhouse Gas (GHG) emissions economy-wide from 125.716 million metric tons of CO₂e (carbon dioxide equivalent) per year to 119.430 million metric tons of CO₂e per year by June 30, 2020.

Strategies:

- Oversee the development of a cross-departmental blueprint for pollution reduction.
- Reduce Carbon Dioxide (CO₂) from transportation.
- Reduce methane emissions from oil and gas industry and CO₂ emissions from electricity sector.



WIG - Wildly Important Goals

Air Quality (2 of 2)



WIG 2: Reduce ozone from 83 parts per billion (ppb) to 80 ppb by June 30, 2020.

Strategies:

- Reduce Volatile Organic Compounds (VOC), Oxides of Nitrogen (NOx) from oil and gas (O&G) industry.
- Support local agencies and Colorado Oil and Gas Conservation Commission (COGCC) in Oil and Gas regulations.
- Reduce VOC and NOx emissions from non-O&G contributors to emissions.



WIG - Wildly Important Goals

HEAL - Healthy Eating Active Living (1 of 2)



WIG 3: Decrease the rate of **Colorado** adults who have obesity from 22.9% to 22.6% by June 30, 2020

Strategies:

- Increase the consumption of healthy food and beverages through education, policy, practice, and environmental changes.
- Increase the number of Coloradans in private health plans who have a covered benefit for screening, counseling and referrals to intensive behavioral interventions for obesity prevention and control.
- Significantly increase the reach of the National Diabetes Prevention Program (DPP) and Diabetes Self-Management Education and Support (DSMES) by collaborating with the Department of Health Care Policy and Financing (HCPF).



WIG - Wildly Important Goals



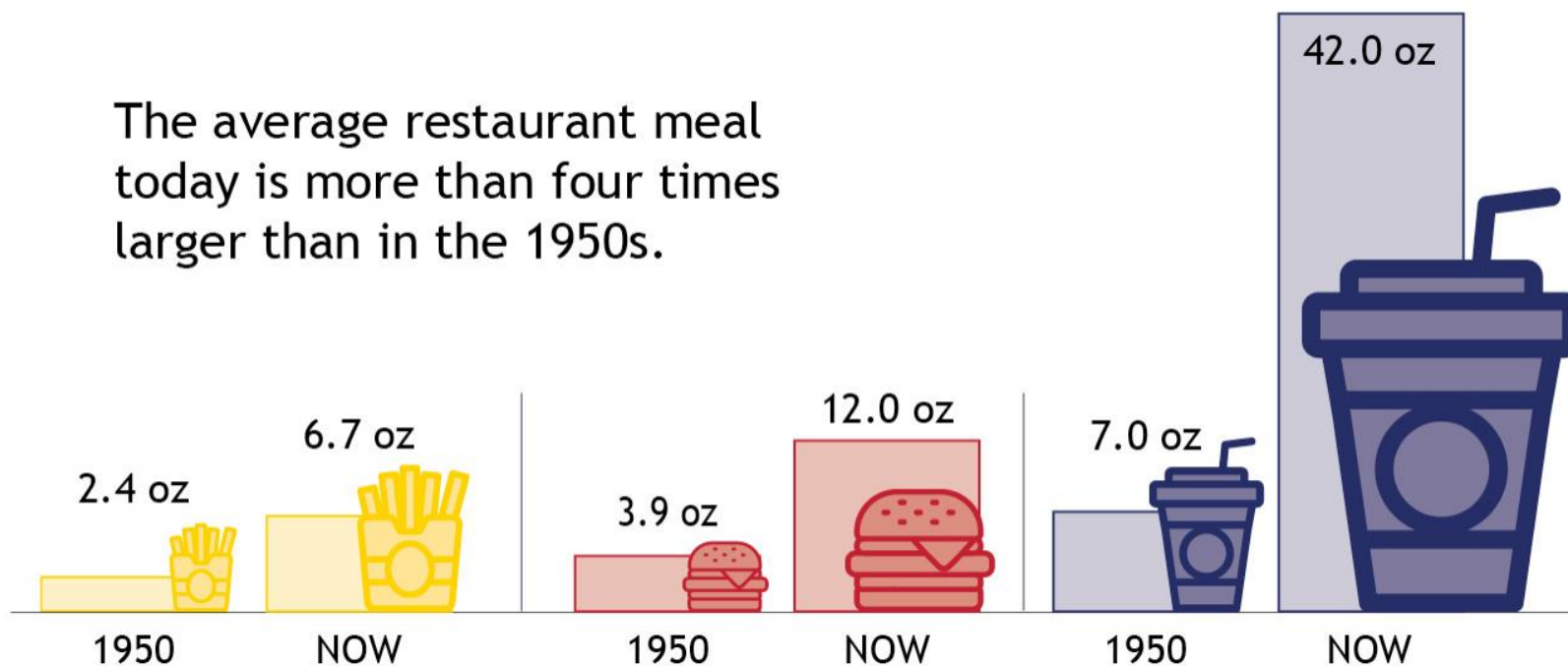
Obesity Increases in U.S. Adults





Obesity: Trends in Portion Size

The average restaurant meal today is more than four times larger than in the 1950s.





HEAL - Healthy Eating Active Living (2 of 2)

WIG 4: Decrease the rate of Colorado children (age 2-4 years) who participate in the WIC Program and have obesity from 7.5% to 7.25% by June 30, 2020.

Strategies:

- Ensure access to breastfeeding-friendly environments.
- Increase the consumption of healthy food and beverages and decrease consumption of sugar-sweetened beverages through education, policy, practice and environmental changes.

Baby-Friendly USA
The gold standard of care



WIG - Wildly Important Goals



Immunizations

WIG 5: Reverse the downward trend and increase the percent of kindergartners protected against measles, mumps, and pertussis from 87.4% to 90% (1669 more kids) by June 30, 2020.

Strategies:

- Use available data to identify areas of under-immunization and determine the root cause (due to vaccine hesitancy and/or that lack adequate access to immunizing providers).
- Perform targeted programming to increase immunization rates.
- Support legislation and policies that promote complete immunization and exemption data in the Colorado Immunization Information System (CIIS).

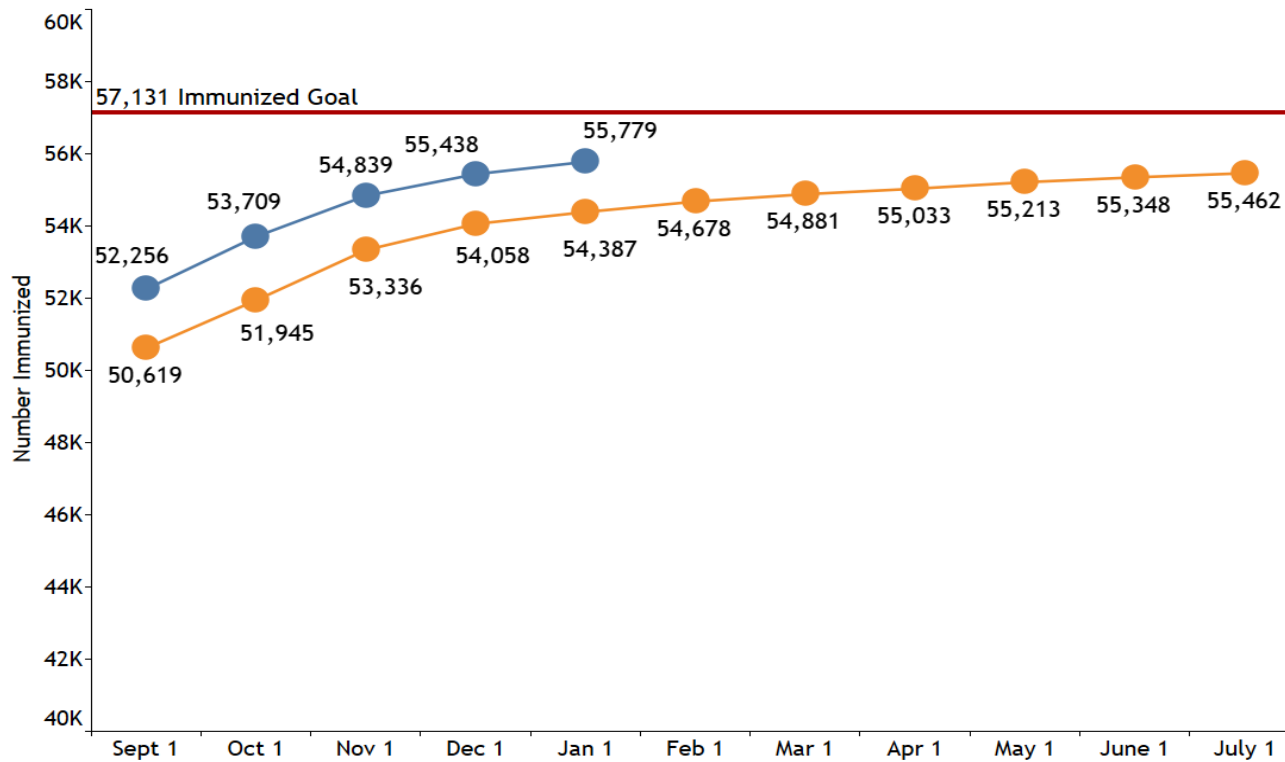


WIG - Wildly Important Goals



WIG Measure: Measles Vaccination of Kindergartners (MMR)

Number of Kindergarten-aged Students Fully Immunized for MMR By July



2019

2018



Suicide Reduction

WIG 6: Reduce Colorado's suicide rate from 21.7 per 100,000 people in 2018 to 20.6 (a 5% decrease) by June 30, 2020.

Strategies:

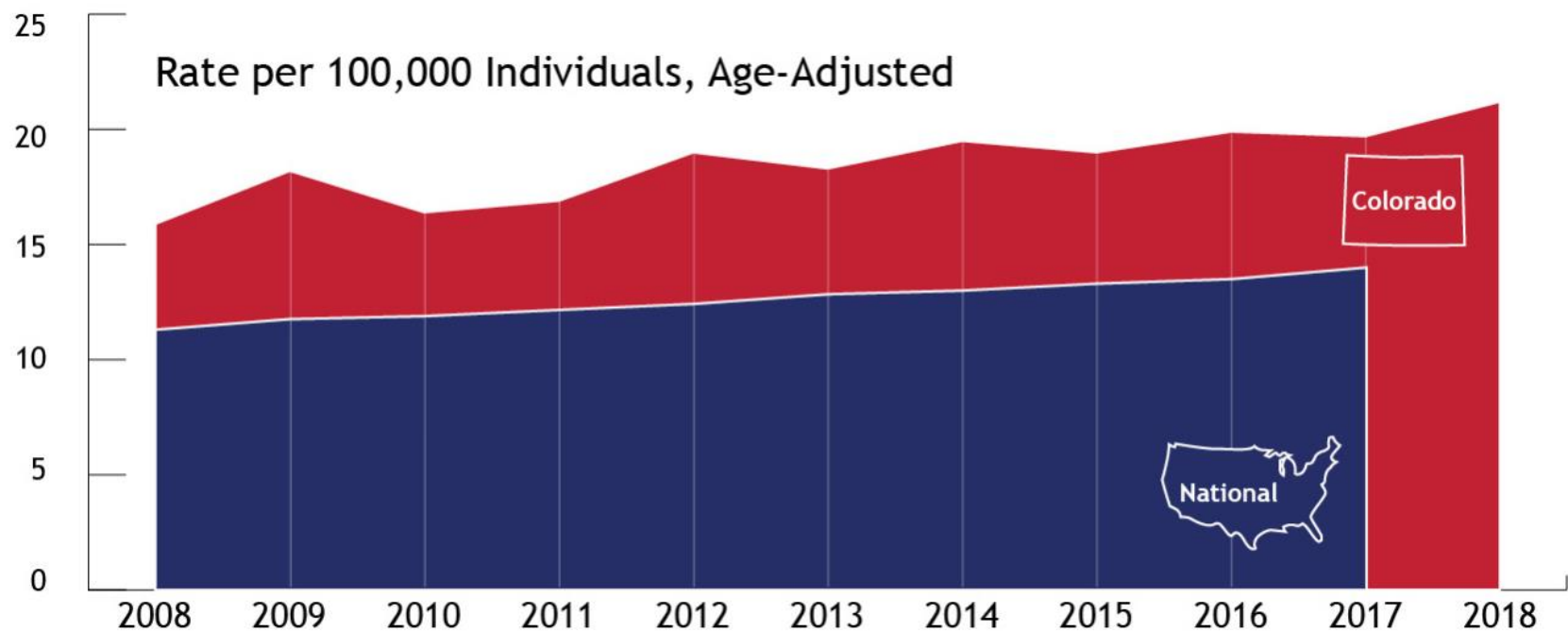
- Create a framework to address suicide in Colorado.
- Increase active analysis and dissemination of suicide-related data.
- Improve health system readiness and response to suicide.
- Increase suicide prevention and intervention efforts for priority occupations (including first responders, construction, installation and maintenance, and agriculture and ranching).
- Increase suicide prevention and intervention efforts for special populations at higher risk for suicide (LGBTQ+, youth, veterans, middle-aged men, older adults, and counties with the highest burden).



WIG - Wildly Important Goals



Suicide in Colorado and U.S.

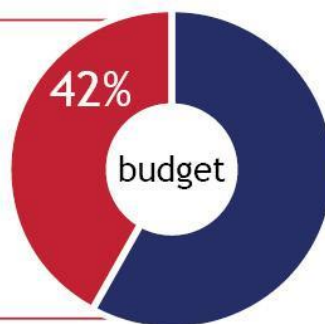




Colorado Suicide By Age (2014-2018)

YOUTH AGE 0-19

account for 6% of suicide deaths while 42% of OSP's State General Fund budget is restricted to youth.



Suicide deaths, 2014-2018 by age



Operational Excellence

Digital Transformation

WIG 8: 100% of new technology applications will be virtually available to customers, anytime and anywhere by June 30, 2020.

Strategies:

- Implement the CDPHE Digital Transformation Plan.
- Optimize processes prior to digitizing them.
- Improve data dissemination and interoperability methods and timeliness.



WIG - Wildly Important Goals



In Conclusion

CDPHE Operating Principle:

We are passionate about making meaningful impact

- Our efforts create, improve, and benefit a healthier Colorado
- We design, implement, and evaluate innovative solutions
- We base our decisions on available data, evidence, and best practices
- We make changes to things that are not working

Thank you!

- Perry May, *Perry May, Deputy Executive Director of Health Facilities, Colorado Department of Human Services*
 - Where is the Department focused on in 2020?

State Priorities	Gov/Lt. Gov	Health Cabinet	APM QM	HTP QM	Affordability Roadmap	OeHI Care Coord.	OeHI Consent Consumer Engagement	Denver Foundation Grant
Support Rural Providers	x	x	x	x	x	x	x	x
Maternal/ Child Health/ Foster Kids	x	x	x	x	x	x	x	
Mental Health Services/ Suicide Prevention	x	x	x	x		x	x	x
Opioid and SUD Abuse Prevention	x	x	x	x	x	x	x	x
Cost Control- Meds, Hospital Utilization, Health Care Costs	x	x	x	x	x		x	
Aging, Advanced Directives/ LTSS/IDD, Services and Supports	x	x			x	x	x	x
Homelessness/ Housing Instability	x	x				x		x
Food Security	x	x		x	x	x	x	
Reduce Recidivism Rates	x	x			x	x		

- Are there one or two priorities the eHealth Commission and OeHI can focus Roadmap efforts?
- Commissioners click link in email to rank highest to lowest priorities for Roadmap Focus

[Commission Poll Live Results](#)



OeHI

Office of eHealth Innovation

COLORADO HEALTH OBSERVATION REGIONAL DATA SERVICE (CHORDS)

BILL BURMAN, MD
PAUL PRESKEN

Colorado Health Observation Regional Data Service (CHORDS)

*Harmonizing Information
for a Healthier Colorado*



Bill Burman, MD
Paul Presken

E-Health Commission
February 12, 2020



(Re)Introduction to CHORDS



CHORDS

Harmonizing Information for a Healthier Colorado

CHORDS is a distributed data network conceived in 2011 that uses electronic health record (EHR) data to support public health evaluation, monitoring and research efforts.



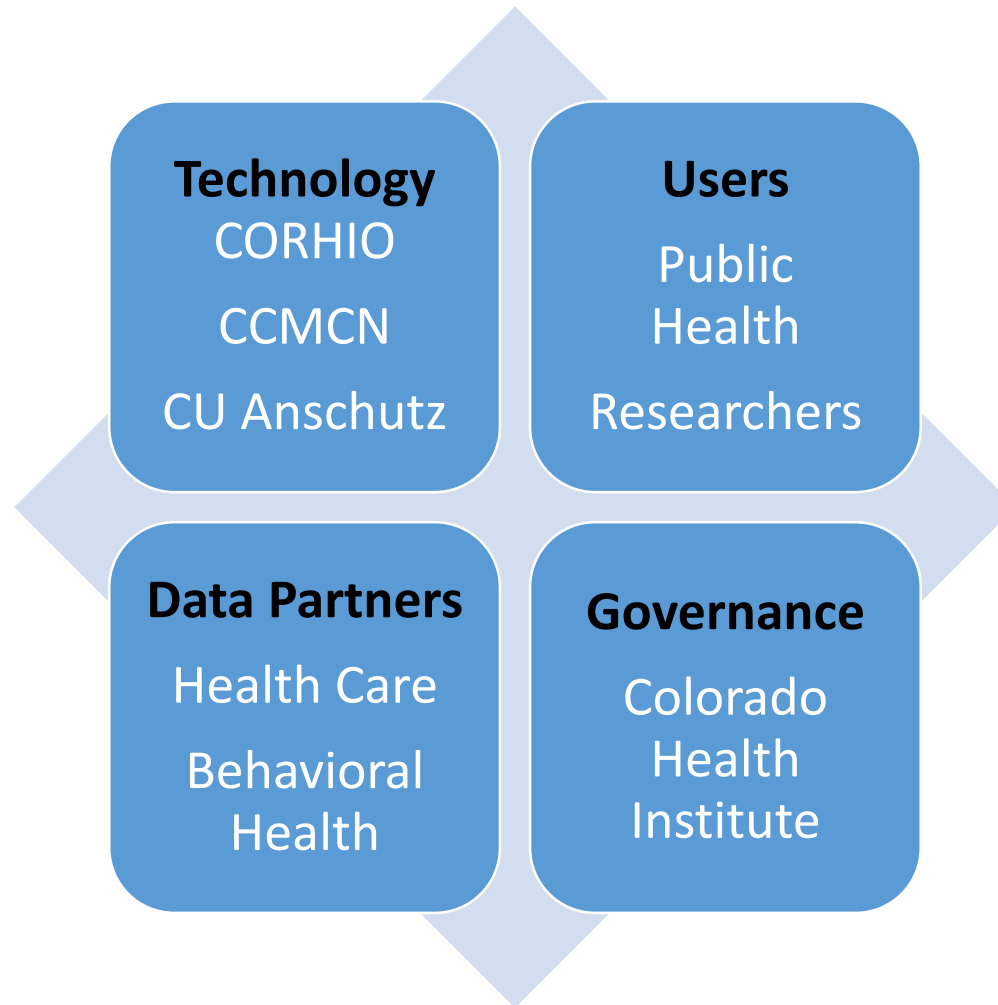
coloradohealthinstitute.org



@COHealthInst



The CHORDS Network



CHORDS Network | Data Partners



Health Systems

- Children's Hospital Colorado
- Denver Health
- Kaiser Permanente Colorado



Behavioral Health Providers

- Mental Health Center of Denver
- Jefferson Center for Mental Health
- Mental Health Partners



Safety Net Providers

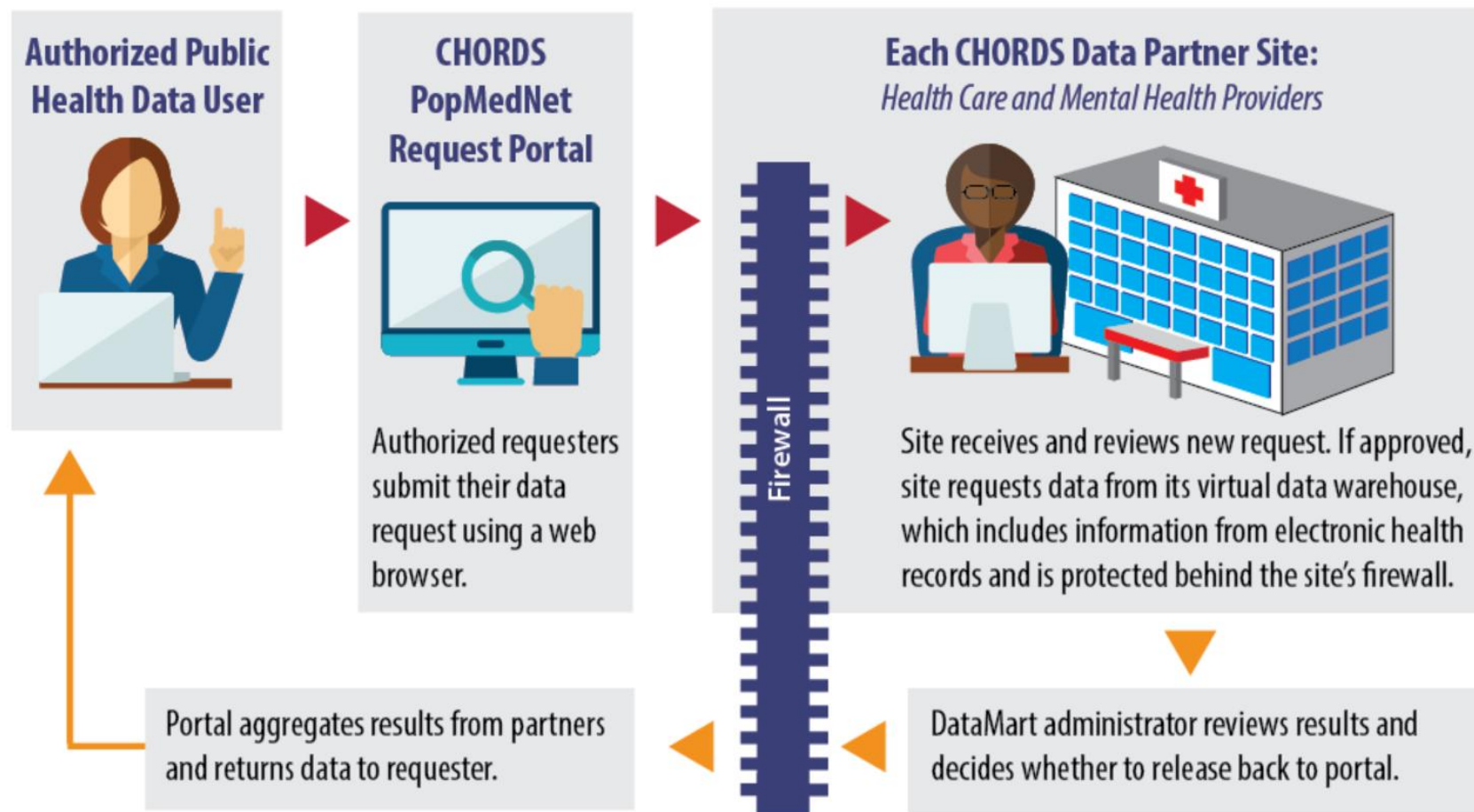
- Clinica Family Health
- Clinica Tepeyac
- Colorado Coalition for the Homeless
- High Plains Community Health Center
- North Colorado Health Alliance
- Salud Family Health Centers
- STRIDE Community Health Center

CHORDS Data | What's Included?

- Approximately three million patient records
- Patient data from 2011-2018
- Limited dataset
- Geocoded home addresses
- Diagnosis codes
- Lab test results
- Behavioral health screening (e.g. PHQ9)
- Social determinants of health (e.g. housing)



CHORDS Technology | How Does it Work?



Round trip from data request to result is approximately 2 weeks



Impact of CHORDS on Colorado Health Priorities

CHORDS Impact | Priority Issues for Colorado

CHORDS support key health initiatives in the state:

- Behavioral Health and Integrated Care
- Opioids and Prescribing
- Accurate, Local-Level Community Insights
- Impact of Social Determinants of Health
- Linking of patient records across the network to inform population health



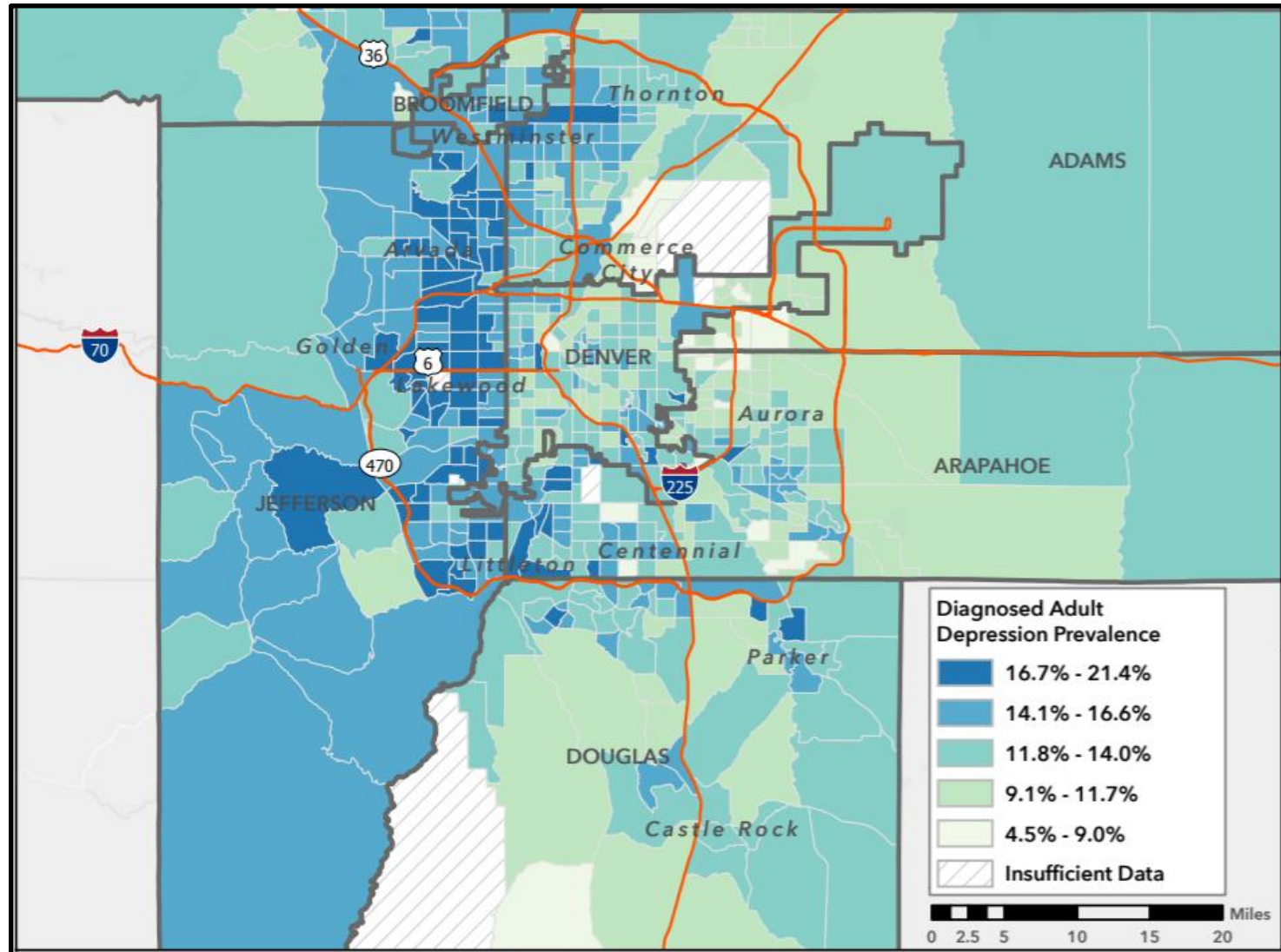
CHORDS Impact | Public Health

Public Health uses CHORDS for estimating prevalence of community health conditions:

- Body Mass Index
- Cancer
- Cardiovascular Disease
- Cognitive Health
- Diabetes
- Disabilities
- Liver Health
- Mental Health
- Musculoskeletal
- Respiratory
- Substance Use
- Tobacco Use



CHORDS Impact | Targeting Interventions



CHORDS Impact | Research

*Multiple research projects use CHORDS data.
Examples Include:*

- Childhood Obesity Data Initiative
- SEARCH for Diabetes in Health
- Long-Acting Reversible Contraceptives and Adolescent Pregnancy
- Asthma Exacerbation Index
- Opioid Tapering
- Spinal Fusion Procedures and Prescribed Opioids





Lessons Learned from CHORDS

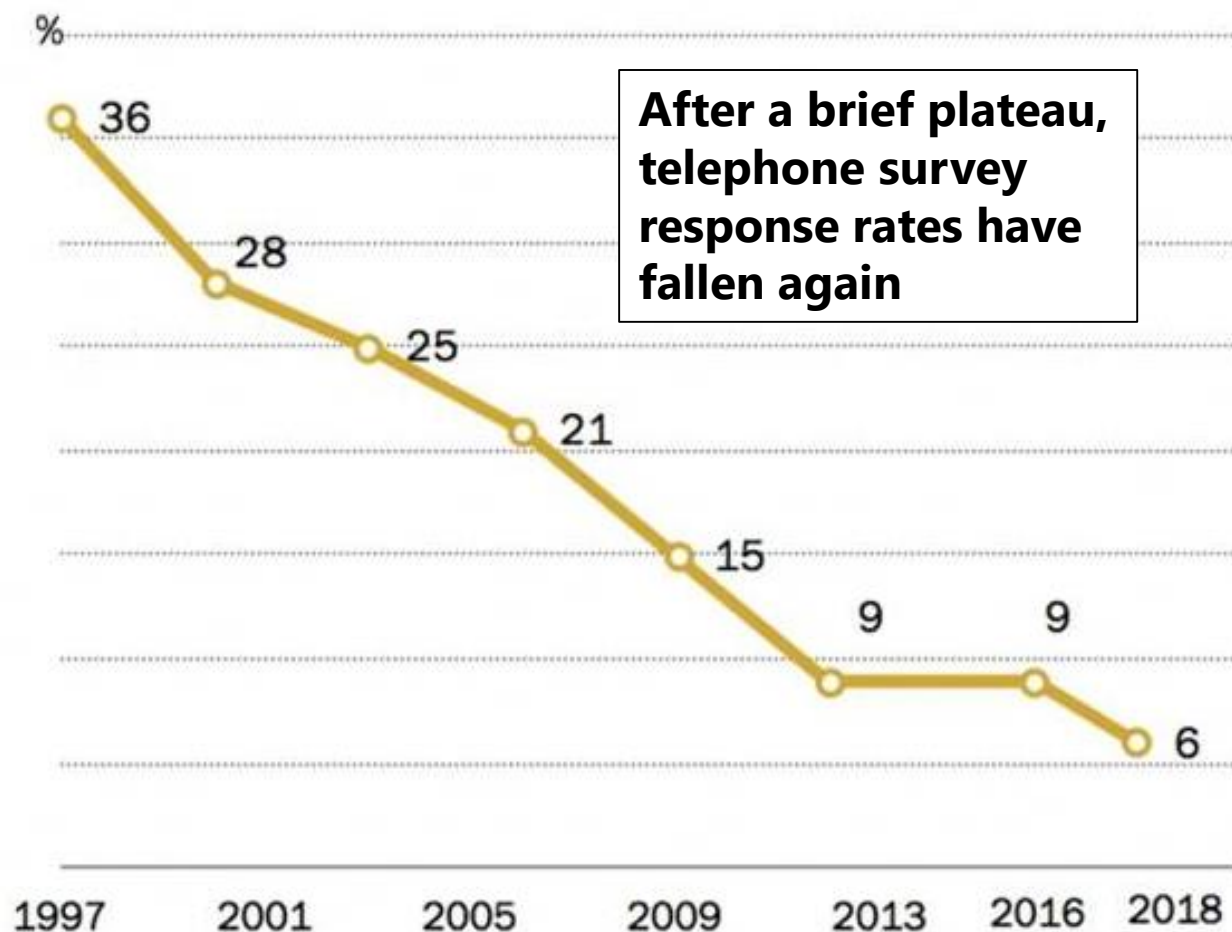
CHORDS Lessons | Key Takeaways

- Standardization of clinical data across data partners is achievable, but hard work.
- Behavioral health data and primary care data are fundamentally different.
- Guaranteeing control of access to their own data facilitates data sharing among partners.
- Proprietary data remains proprietary. But trust and governance can work magic.
- Social Determinants of Health data are still very limited but have potential.



CHORDS Lessons | Future of Health Monitoring

Response rate by year (%)



Source: Pew Research Center telephone surveys conducted 1997-2018



The Future of CHORDS

CHORDS Future | Funding History

- The Colorado Health Foundation has funded the CHORDS network through a grant since 2016, investing nearly \$4 million dollars
- Funds are spent primarily on technical infrastructure, support and assistance for data partners.
- Current Colorado Health Foundation grant funding ends at the end of 2020.
- Public health and research projects have generated a small amount of funding.



CHORDS Future | Sustainability Options

- CHORDS is exploring additional funded use cases to help sustain the network.
- Would the Commission acknowledge the efforts and contributions of data partners and supporting organizations?
- Are there other opportunities on the Health IT Roadmap that the CHORDS network can support?



Q & A



OeHI

Office of eHealth Innovation

PUBLIC COMMENTS



OeHI

Office of eHealth Innovation

CLOSING REMARKS

JASON GREER, CO-CHAIR