



OeHI

Office of eHealth Innovation

# eHealth Commission Meeting

HYBRID CONFERENCE

May 14, 2025

# May Agenda

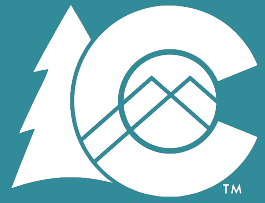


OeHI

Office of eHealth Innovation

Title	Start	Duration
<b>Call to Order</b> <ul style="list-style-type: none"><li>• Roll Call and Introductions</li><li>• Approval of March and April Meeting Minutes</li><li>• May Agenda and Objectives</li></ul> <i>Kaakpema “KP” Yelapaala, Chair</i>	12:00	5 mins
<b>Announcements</b> <ul style="list-style-type: none"><li>• OeHI Updates-eHealth Commission Updates</li><li>• Decision Items &amp; Action Items</li></ul> <i>Stephanie Pugliese, Director, Office of eHealth Innovation (OeHI)</i> <i>All Commissioners and Advisors</i>	12:05	5 mins
<b>Chair and Vice Chair Elections</b> <i>Stephanie Pugliese, Director, Office of eHealth Innovation (OeHI)</i>	12:10	20 mins
<b>Contexture Colorado HIE Updates and Discussions</b> <i>Contexture Colorado</i>	12:30	75 mins
<b>Public Comment Period</b>	1:45	5 mins
<b>Closing Items</b> <ul style="list-style-type: none"><li>• Closing Remarks</li><li>• Open Discussion</li><li>• Recap Action Items</li><li>• Adjourn Public Meeting</li></ul> <i>Kaakpema “KP” Yelapaala, Chair</i>	1:50	5 mins

## OeHI and eHealth Commission Updates



OeHI

Office of eHealth Innovation

# Chair and Vice Chair Elections



## Contexture Colorado HIE Updates and Discussions

# Colorado HIE Updates and Discussions

May 2025

Melissa Kotrys  
Chief Executive Officer  
[melissa.kotrys@contexture.org](mailto:melissa.kotrys@contexture.org)

Marc Lassaux  
Chief Solutions Officer  
[Marc.lassaux@contexture.org](mailto:Marc.lassaux@contexture.org)



# Agenda



## About Contexture



## ONE Platform Updates



## SUD/Part 2, CRN, Advanced Directives, etc.



## National Interoperability Updates



## Looking Ahead

# About Contexture

# About Contexture

## Who We Are

Contexture is the leading health information exchange (HIE) for Arizona and Colorado. We are the largest health information organization in the Western region

## What We Do

Contexture is a nonprofit regional organization that provides strategic, technical and administrative support to communities committed to advancing health through information sharing

## Our Mission

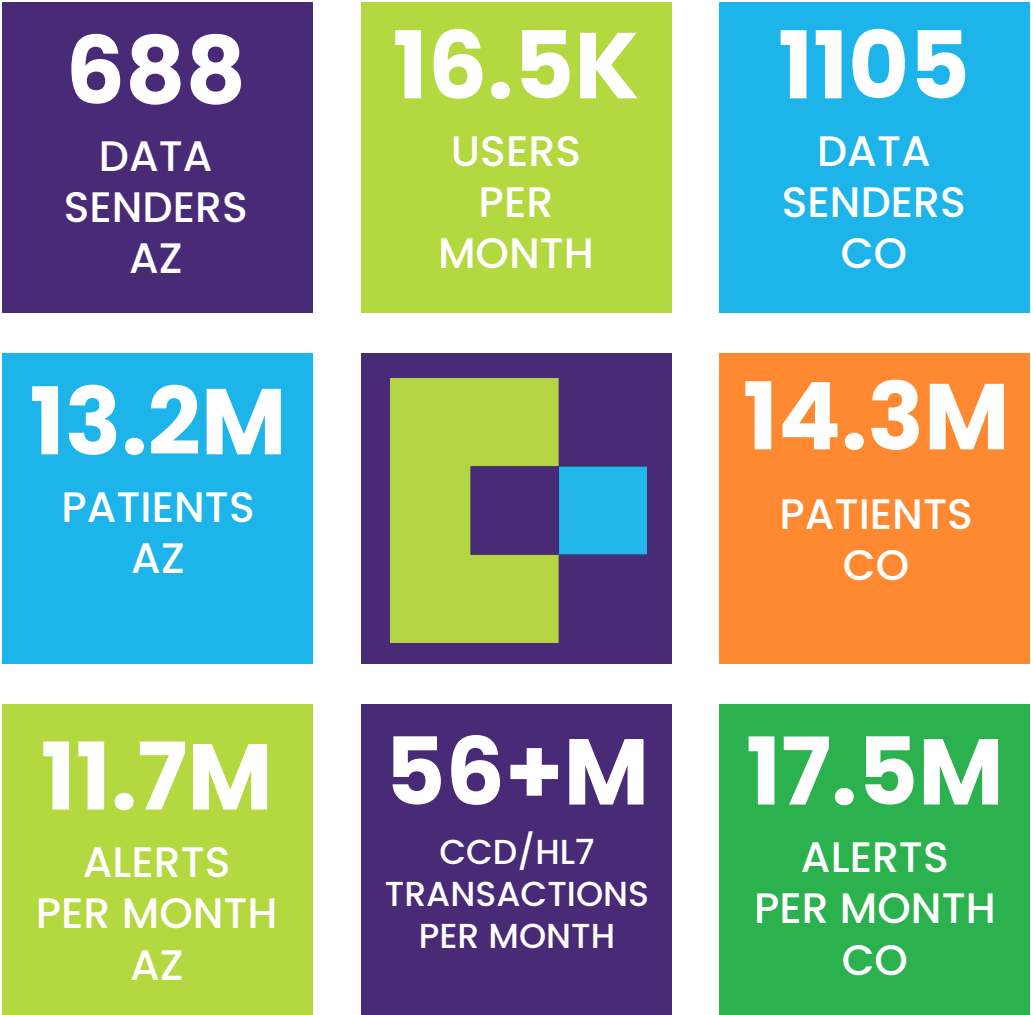
Advancing individual and community health and wellness through the delivery of actionable information and analysis



# Contexture Solutions – Business Lines

<b>Health Information Exchange</b>  Connecting digital health records to give providers the patient information they need at their fingertips.	<b>Quality Improvement</b>  Helping healthcare providers meet various federal reporting and compliance requirements.	<b>Data Analytics</b>  Providing the information necessary to improve individual and community health.	<b>Social Determinants of Health</b>  Connecting healthcare and community service providers to streamline referrals and foster easier access to vital services.	<b>Advance Directives</b>  Providing seamless access to advance directives documents across the continuum of care.	<b>Public Health</b>  Working with public health agencies to improve emergency response, access to vital patient data and reporting.
--	--	--	---	--	--

# Contexture by the Numbers



# ONE Platform Updates



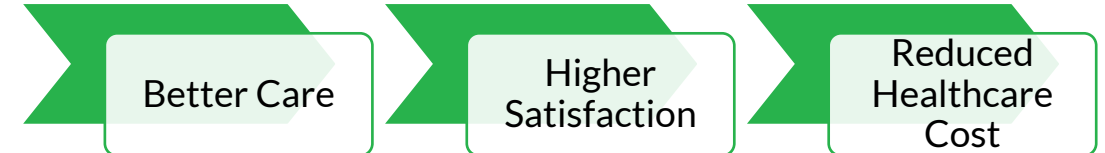
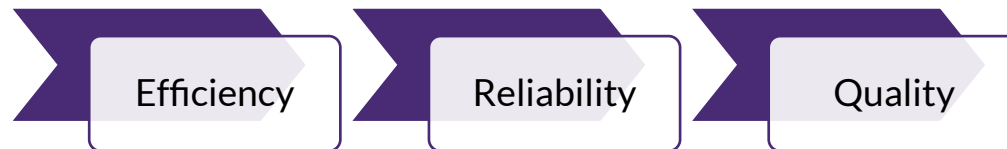
# Health Information Exchange

Connecting digital health records to give providers the patient information they need at their fingertips.

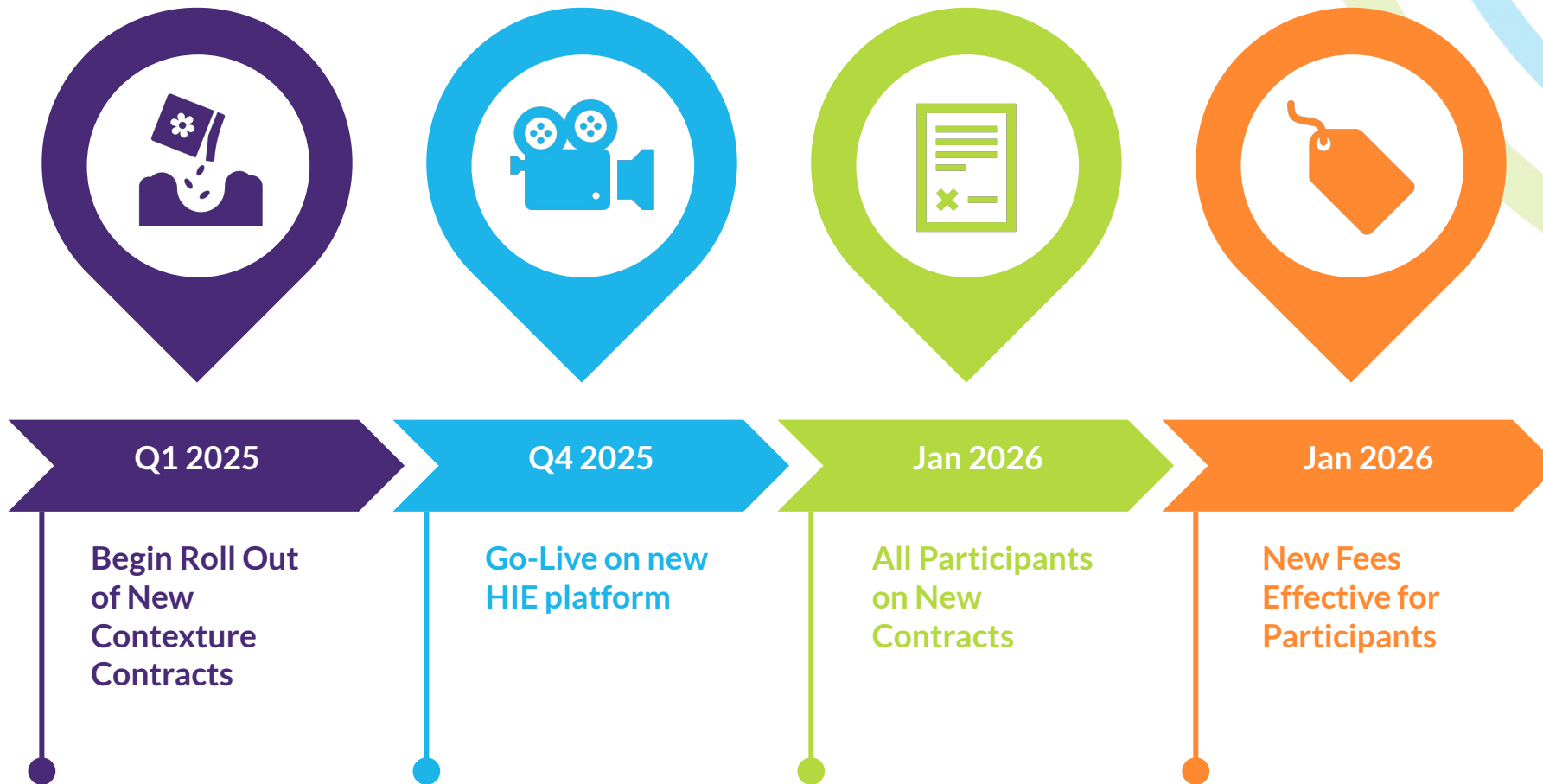
# Contexture ONE Platform – New, Unified HIE Platform

## What You'll Experience:

- Improved data exchange capabilities
- Enhanced security and protection
- Better system performance
- Simplified user experience
- Easier searching & patient matching

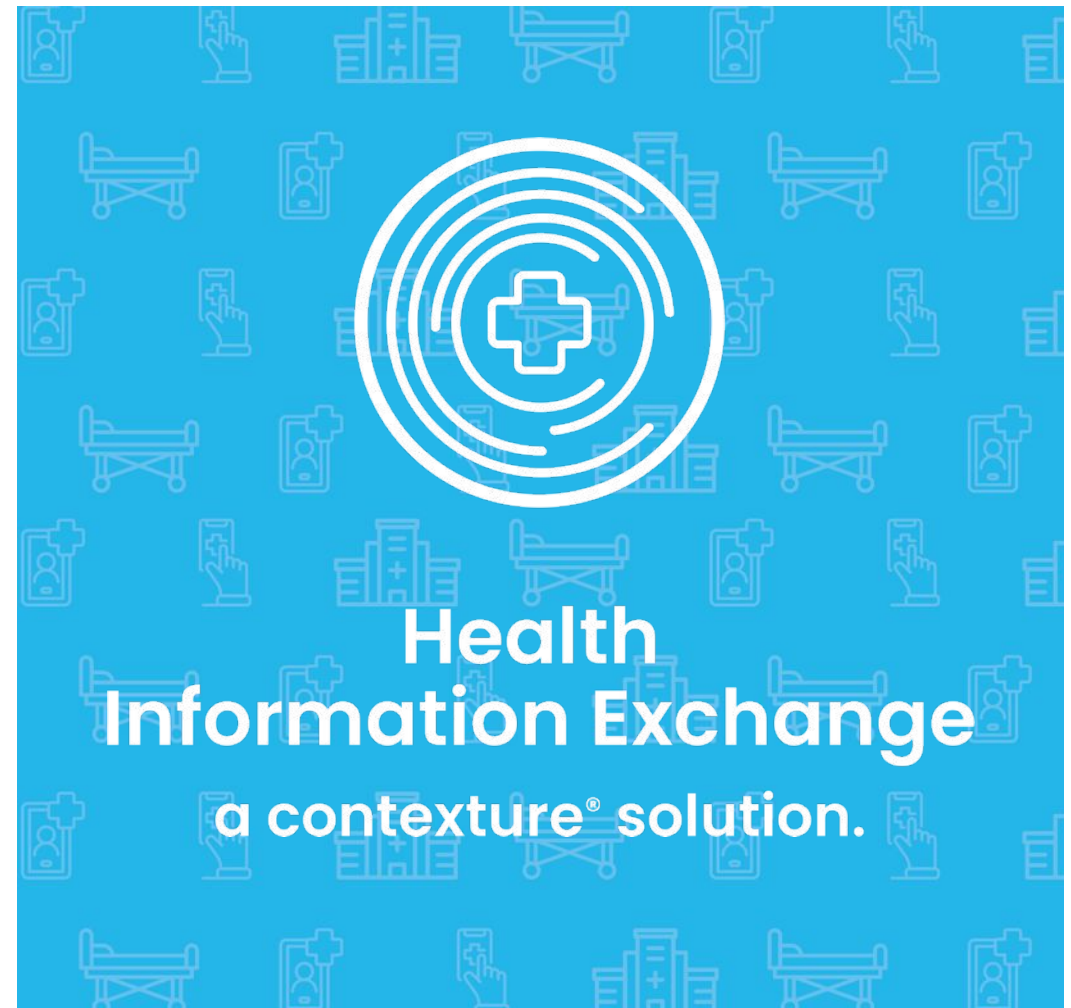


# HIE Platform Migration Timeline



# Key New Services & Benefits on ONE Platform

- Integrated physical and behavioral health data exchange
  - General designation consent will offer streamlined and protected access to behavioral health information
- New solutions to meet your needs:
  - Upgraded portal
  - Quick results
  - New clinical & event notifications
  - Standard reports
- More data, more complete data, and more data quality consistency



# Gold Standard Data Information



## HIE Gold Standard

Highest data quality exchange standards



Focus on inbound data quality and integrity.



Leverage standard interface specifications across all senders.

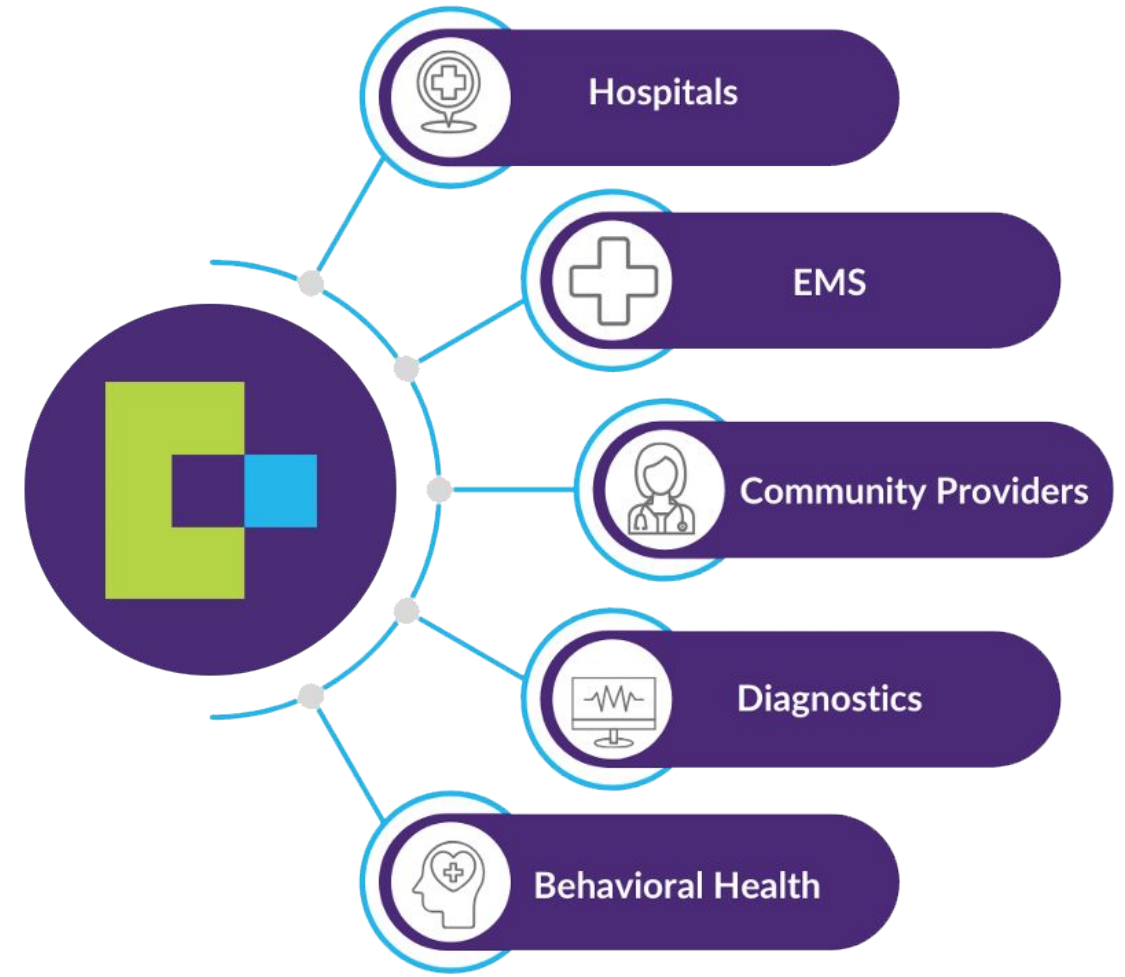


Improved monitoring for quality/quantity expectations. Value Set Monitoring expansion.

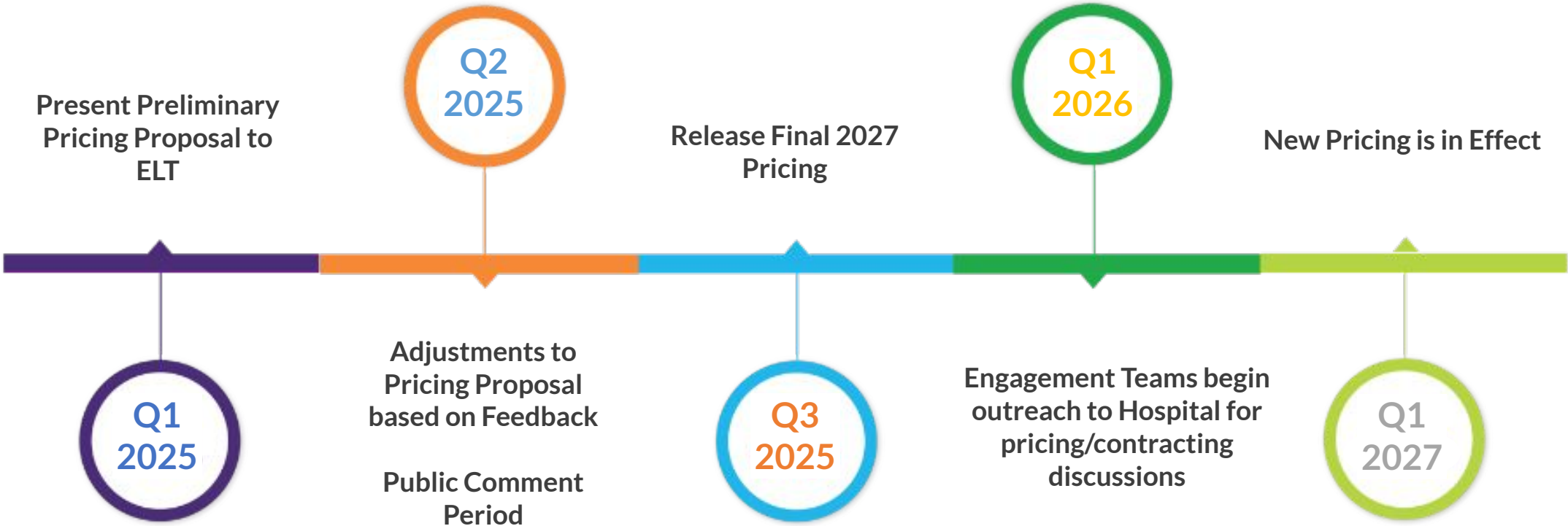


# Contexture HIE Solutions

- Data Sender (HL7 and/or CCD)
- PatientCare 360 Portal
- Direct Secure Message
- Notifications
- Quick Results
- Standard Reports
- Results Delivery
- Smart Summary
- History
- Dynamic Member File
- Custom Reports



# 2027 Hospital Pricing Timeline



# Next Steps

## Data Migration

Working with Data Senders to migrate data to the new platform.

## Contracts & Pricing

Coordinating with each participant on new contracts and pricing.

## Project Queue

Projects will be prioritized based on executed contracts & priority programs.

## Go-Live

All participants will go live on the new platform in Q4 2025.

## Questions

Engagement Managers are available to help answer any questions.



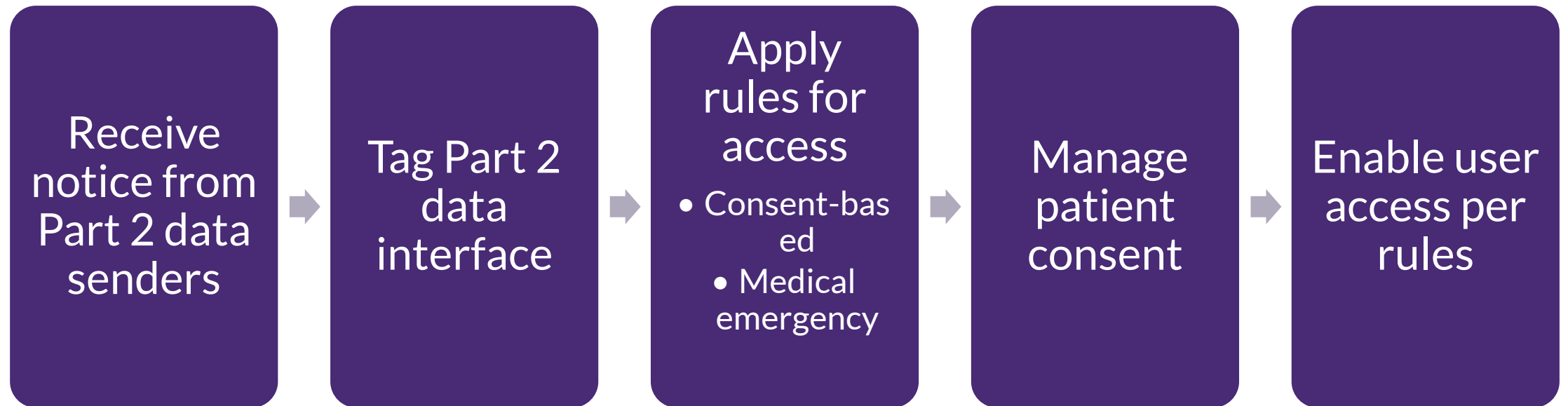
# SUD/Part 2 Data Sharing

# HIE Governance

## Multi-Layered Governance Structure Supports Robust Privacy, Security & Compliance

- Participation Agreement
- Business Associate Agreement
- Contexture Participant HIE Policies
- Patient Opt-Out Rights
- HIE Privacy & Security Controls

# Contexture's Part 2 Data Exchange Design





General HIE  
Opt Out  
(No Clinical  
Data Access)



TPO Consent  
Form  
(Opt-In for  
Part 2 data)



Role-based  
access  
controls

# Part 2 Data Access

## Participant Types that can access Part 2 Data

- Health Care Providers
    - Treatment, Payment, and Limited Health Care Operations activities related to current, prospective, and past patients
  - Health Plans
    - Payment activities related to current and past members and prospective members seeking to enroll in the Health Plan
    - Limited Health Care Operations activities related to current and past members
  - Other Participant types **cannot** access Part 2 information
- All Permitted Purposes are subject to Contexture's Policies*

# Criteria for Medical Emergency Access

- The patient must not be currently opted out of the HIE
- The User must have the appropriate user role
- The user must attest that there is a medical emergency



CONNECTING PEOPLE *changing lives*



Community  
RESOURCE

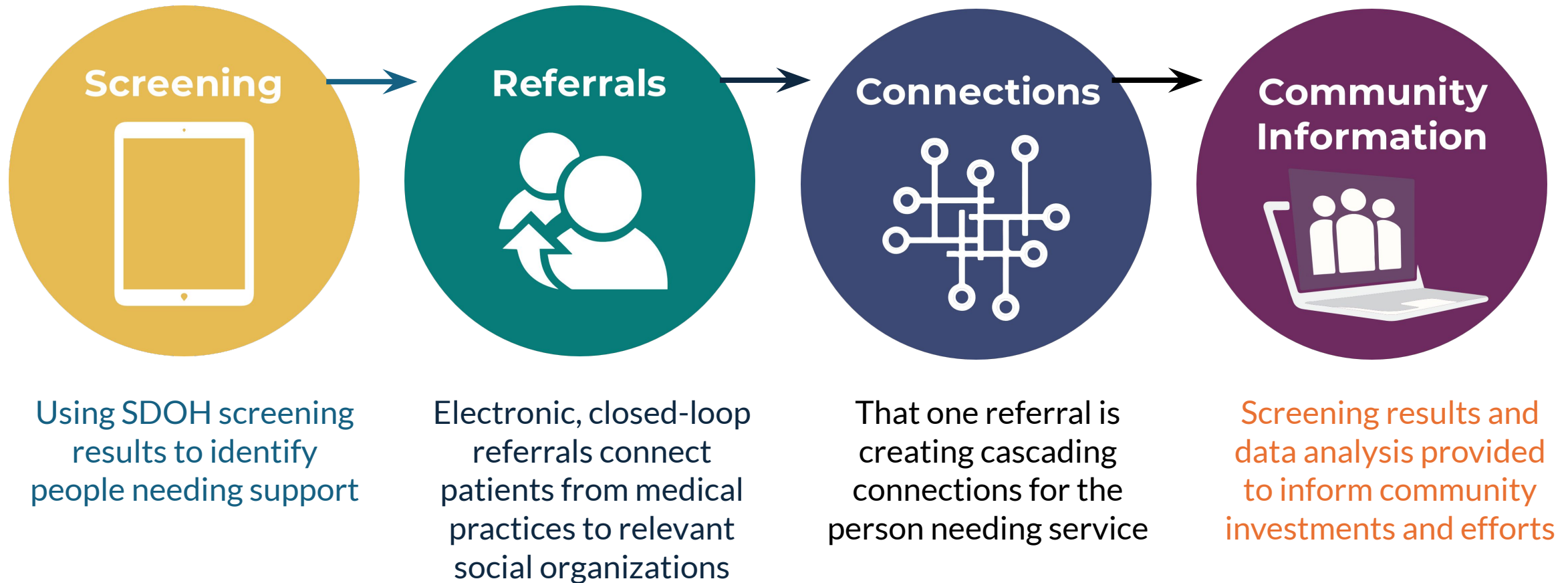
N•E•T•W•O•R•K

*Powered By Quality Health Network*

**CommunityResourceNet.org**



# Community Resource Network: Making a Difference

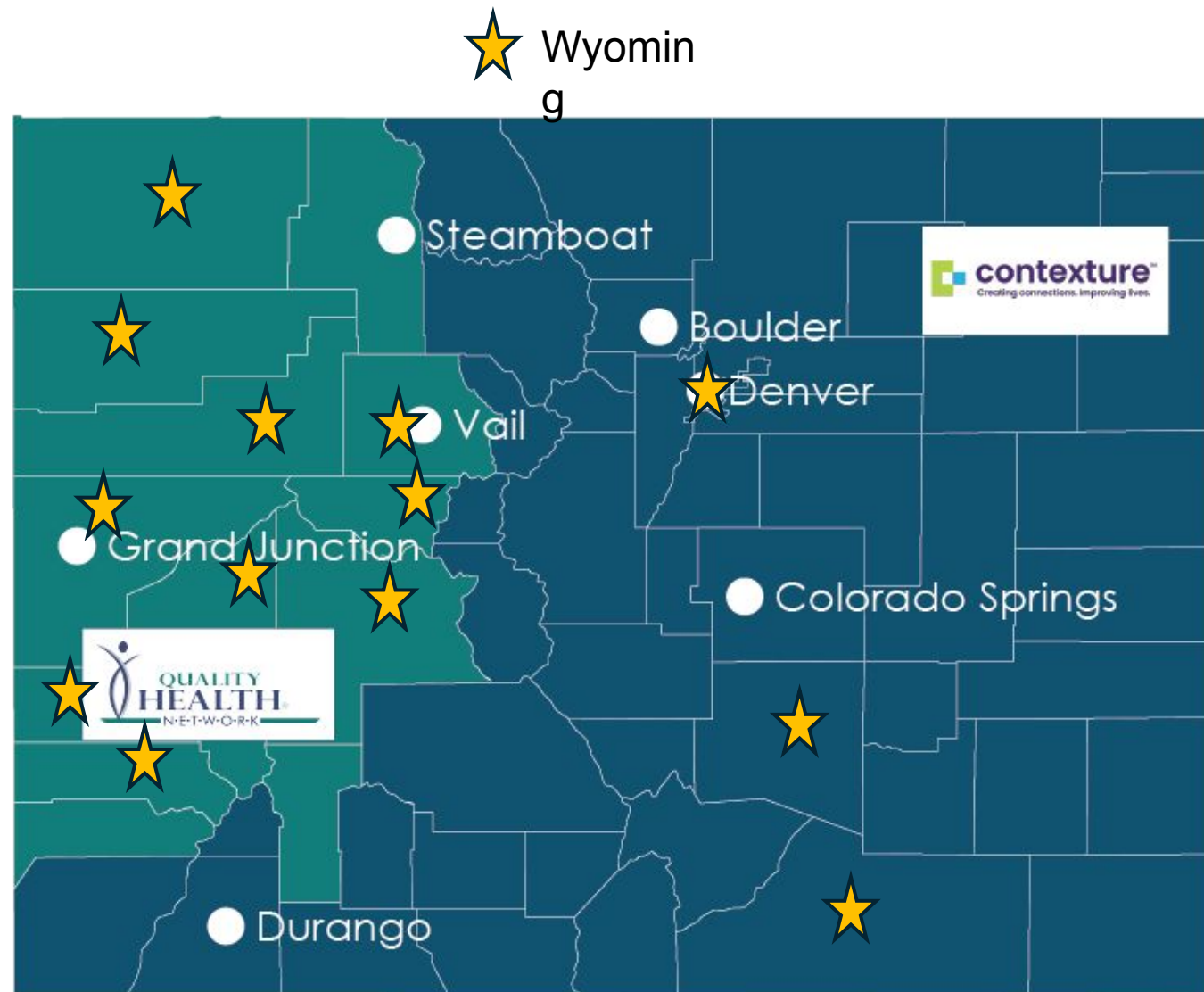




# CRN Current Coverage Area

CRN continues to grow and expand.  
Now serving:

- Western Slope
- Denver County
- Pueblo County
- Las Animas County
- State of Wyoming



# CRN FOOTPRINT



Network Partners



Clients in CRN



CRN Users



Consent Obtained



Referrals Made



Care Team Invites



Health Partners



Social Partners

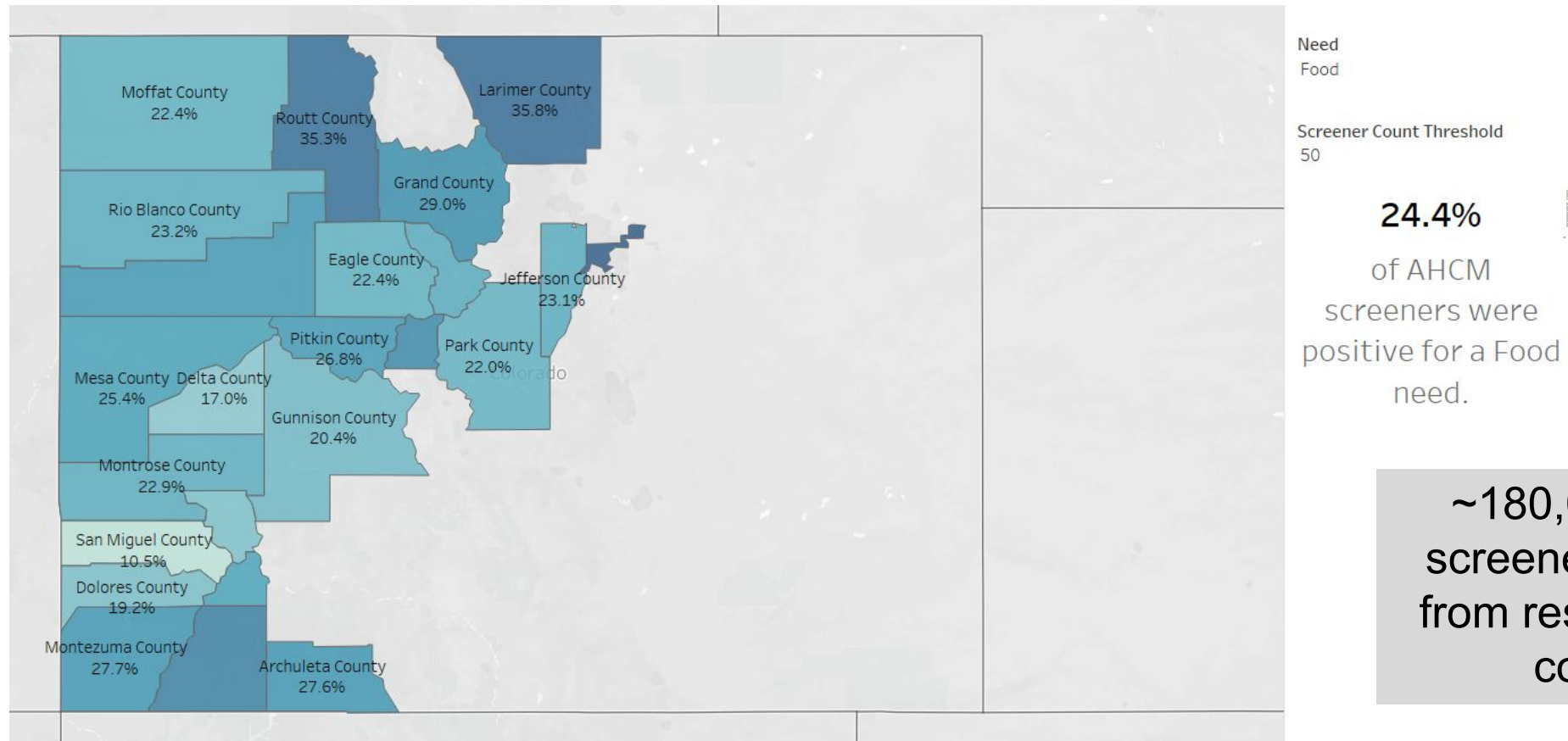


Behavioral Partners

# SDOH Screener Data

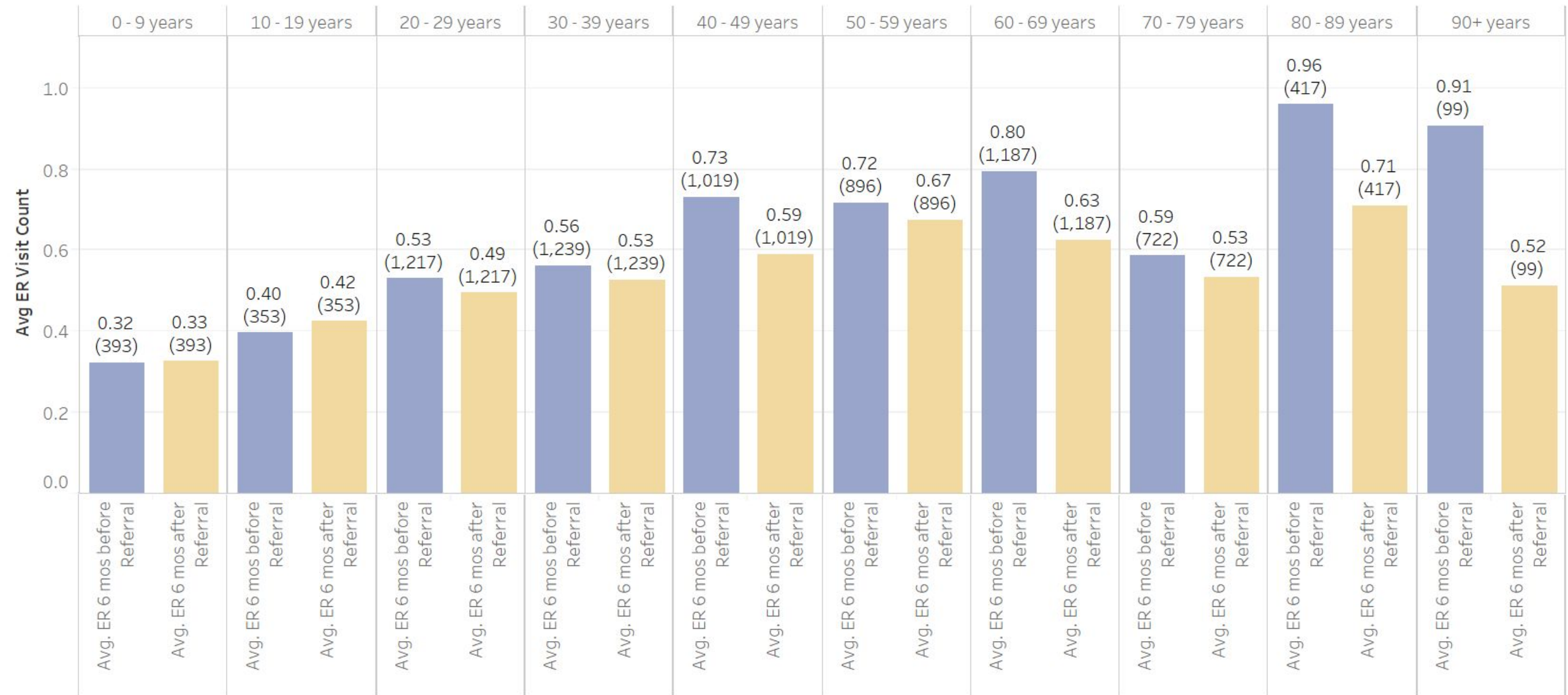
## AHCM Screener Percent w/ Need Heat Map

Food Need Heat Map ( $\geq 50$  AHCM Screeners & MC or MD Payer Type)



~180,000 SDOH screeners obtained from residents in 22 counties

# ER Visits before and after referral

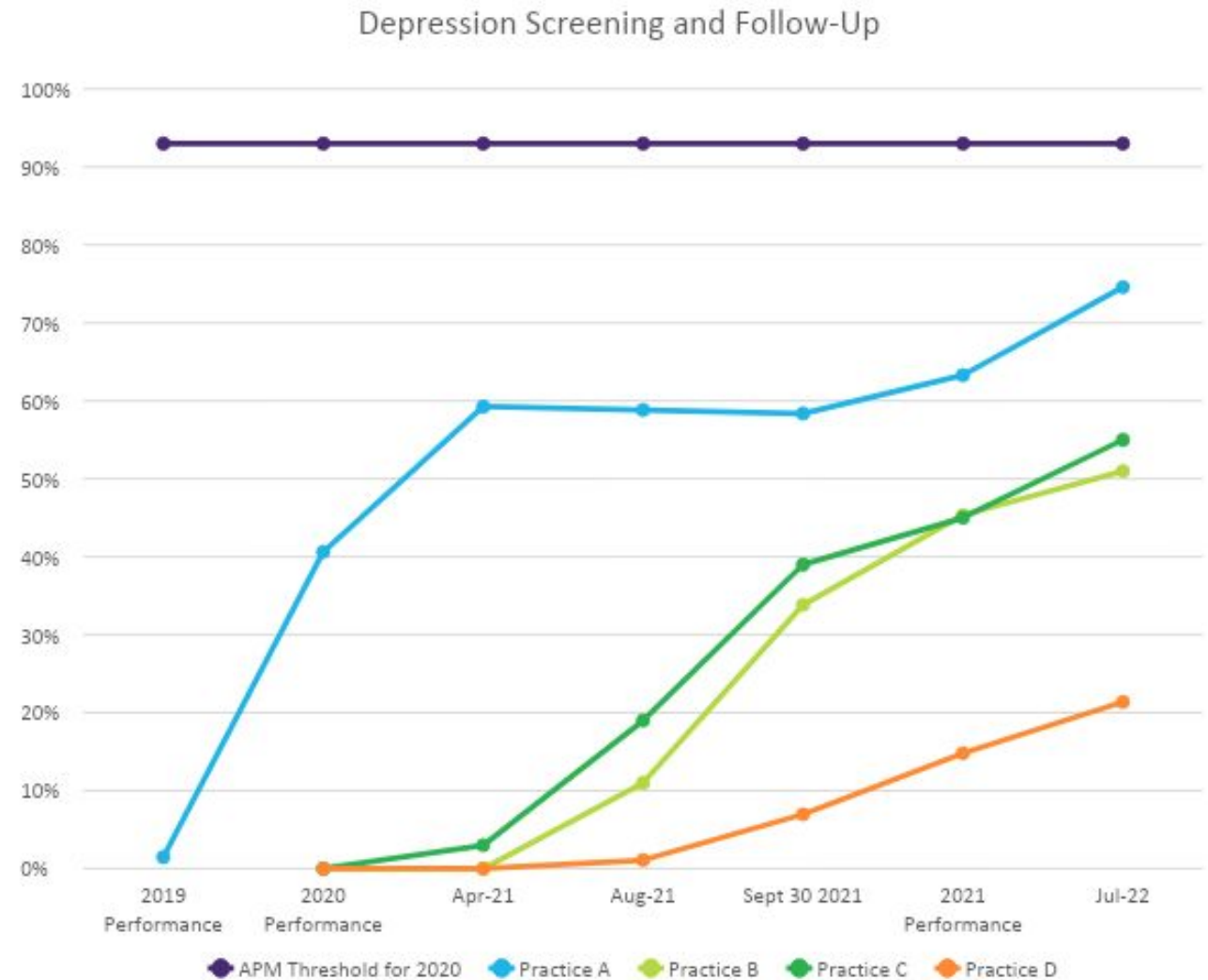




# Quality Improvement & Data Analytics

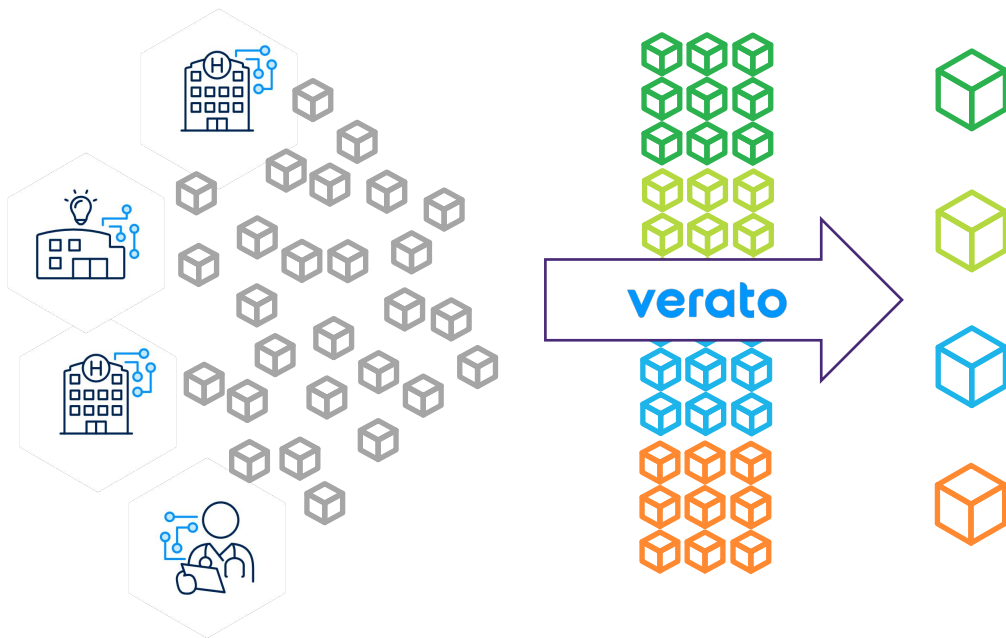
# Electronic Clinical Quality Measure (eCQM) Reporting

- Quarterly Gaps in Care reports and education
- Quarterly run charts to monitor performance
- Technical assistance with eCQM
  - Support in working with EHR vendors on data issues
  - Evaluating workflows
  - Guidance in improving data entry
  - Data and measure validation assistance
  - Standardized measure validation process
- Decreased dependence on EHR reporting

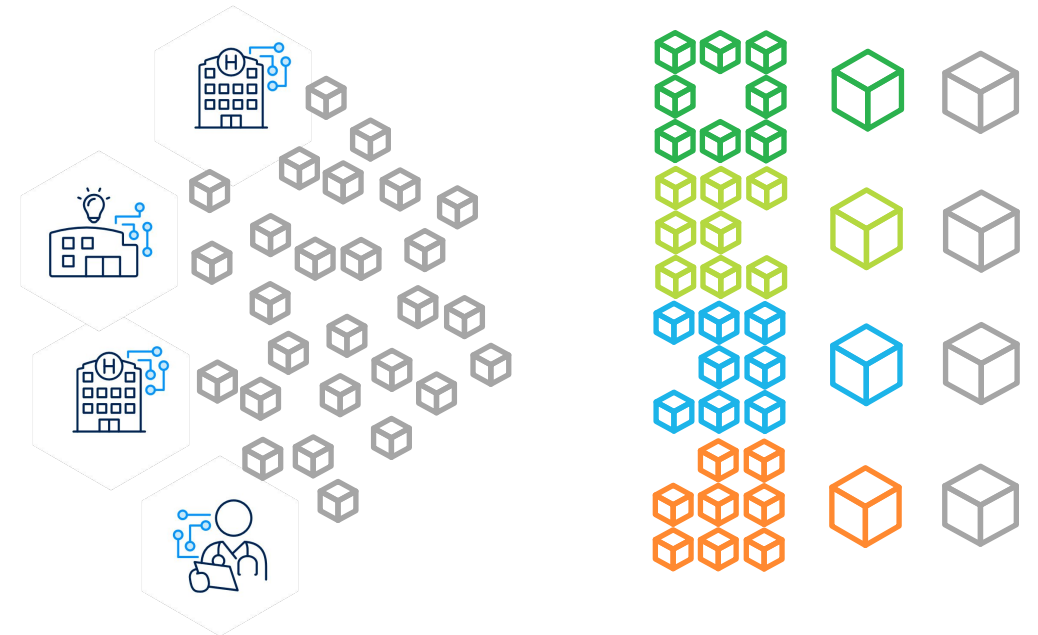


# ONE Platform: Identity Matching

## With Identity Matching



## WITHOUT Identity Matching



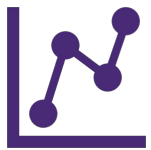
# Data Management Strategy

- **Contexture North Star:** Participants and stakeholders value HIE and desire Contexture's data to be so comprehensive and reliable that they never question its completeness or need to seek information elsewhere.
- Moving from Health Information Exchange to Health Data Utility
- Data Management Strategy supporting the North Star
  - Broader range of data and enhanced data quality
  - More ways to access data
  - Building out the robustness of the network by integrating additional data such as all lab result, medications, and social determinants of health (SDOH) data



Data Management Team is designing and implementing a **modern data platform (MDP)** to support Contexture's current and future data needs and products.

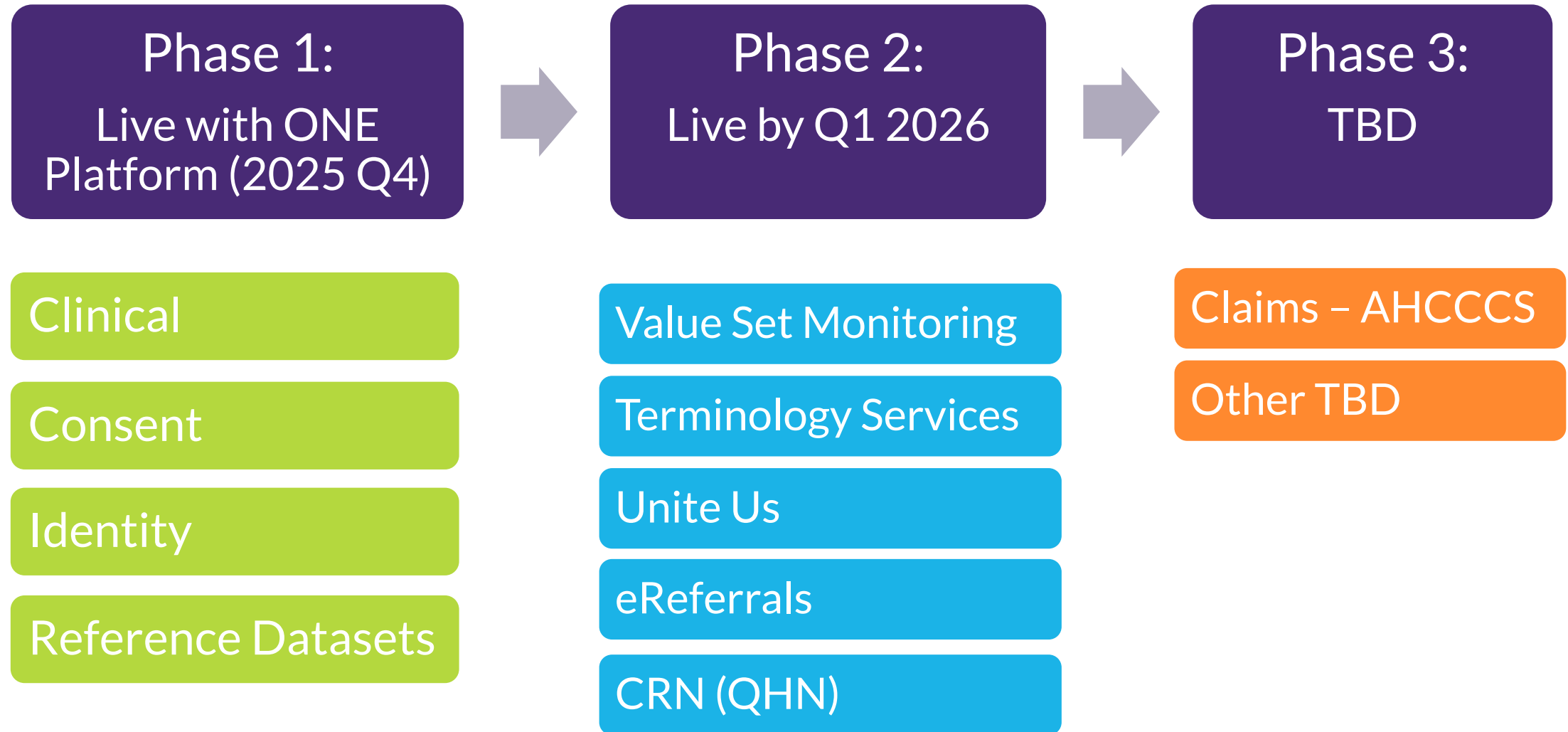
With a focus on **data governance**, and continuous improvement of data quality, this platform will enable rapid creation of high-quality **reporting, visualization, and analytic solutions** to address internal and external customer data needs.



# Modern Data Platform – Overview

- Future Functionality
  - Comprehensive – combined Colorado and Arizona data
    - Behavioral Health
    - Physical Health
  - Readily accessible
  - Scalable and efficient

# Modern Data Platform – Timeline



# Advance Directives

# About Arizona Healthcare Directives Registry (AZHDR)

[www.azhdr.org](http://www.azhdr.org)

- A platform that provides healthcare providers with seamless access to patients' advance directive documents.
- Stores and makes viewable advance directive documents.
- Public, consumer facing portal for uploading and managing documents.
- In 2021, the Az Secretary of State transferred to Contexture advance directive documents that were held in their portal.



# AzHDR Users



Individuals



Healthcare Providers



Legal and Financial Organizations

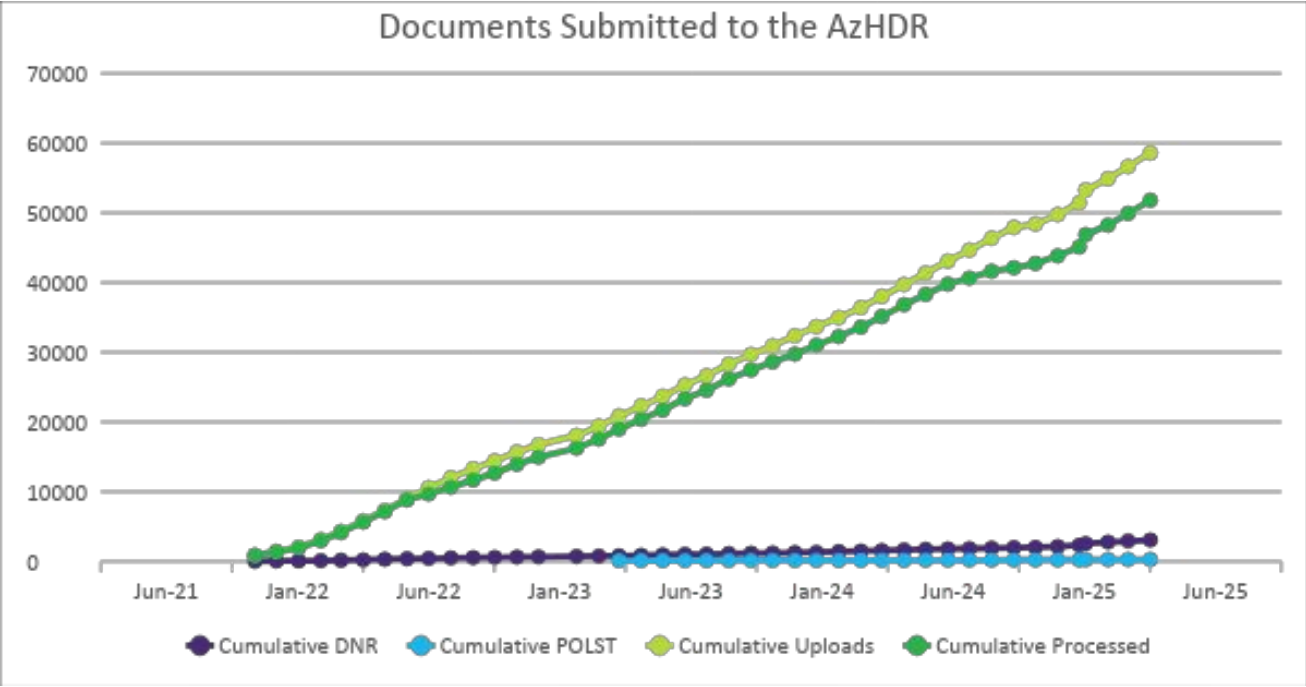
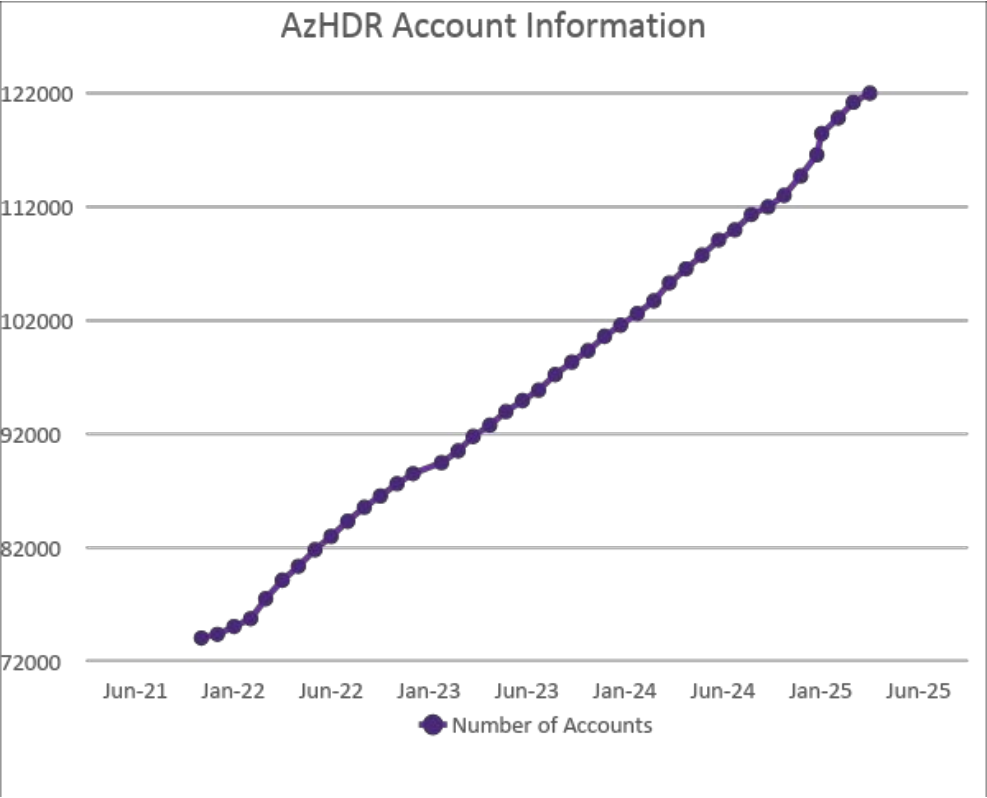


Community-Based Organizations





# AzHDR Accounts & Documents



# AzHDR By the Numbers & Usage Data

## AzHDR by the Numbers

Increase in Consumer Accounts	65%
Healthcare Subscribers	346
Legal/Financial Subscribers	102
Community Based Organizations	13

Searches	Percentage	Uploads	Percentage
Hospitals	53%	Legal/Financial**	92%
Rehab Inpatient	18.2%	Nursing Homes*	4%
Psychiatric Hospitals	14.5%	Hospitals	3%
Nursing Homes*	12%	Rehab Inpt/Psychiatric	.3%
Other Providers	3%	Other Providers	.7%

\*Nursing home providers have been utilizing the portal, overall, for one year less than hospitals and rehab/psychiatric hospitals

\*\*Legal/Financial subscribers do not have same search access as healthcare subscribers



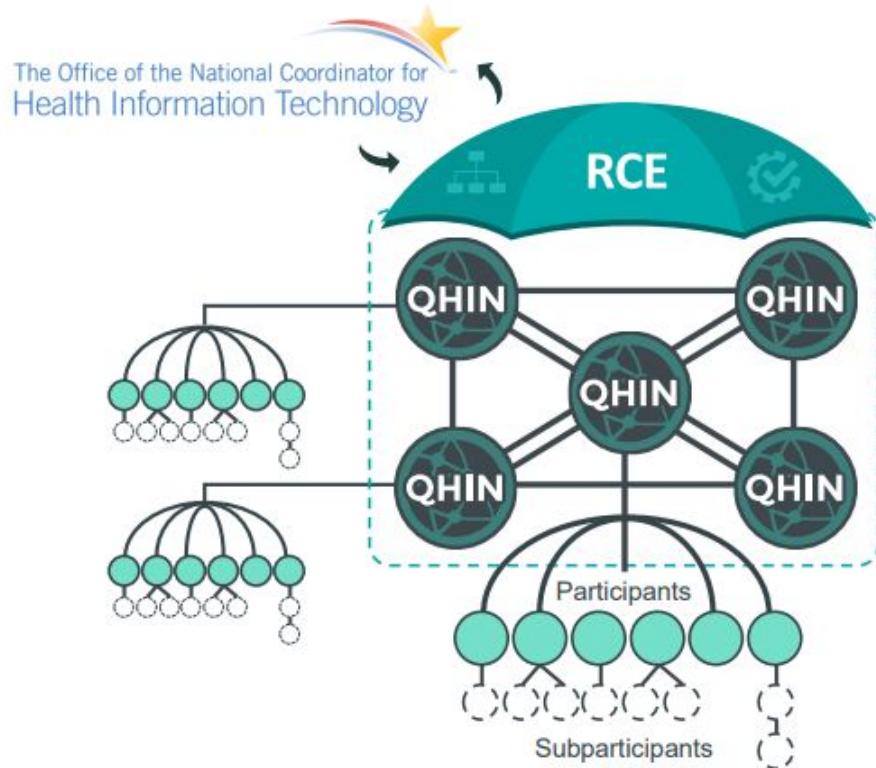
# Advance Directives – What is Possible in Colorado

- Advance directives registry program/function could be implemented in Colorado
- Steps to take:
  - Review and confirm functionality meets needs of Colorado community
  - Analyze Colorado statutory requirements to ensure alignment
  - Explore and confirm funding

# National Interoperability Updates

# ONC Trusted Exchange Framework and Common Agreement (TEFCA)

How will exchange work under TEFCA?



← ONC defines overall policy and certain governance requirements.

← RCE provides oversight and governing approach for QHINs.

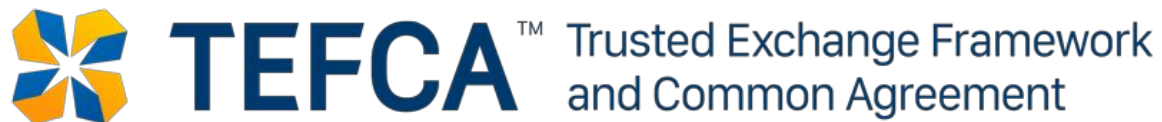
← Qualified Health Information Networks (QHINs) connect directly to each other to facilitate nationwide interoperability.

← Each QHIN connects Participants, which connect Subparticipants.

- TEFCA **is** a contractual and operational framework for data sharing (similar to other current national frameworks)
- TEFCA **is not** a network or standards body
- TEFCA **is not** a technology, platform or services
- TEFCA **is not** legally mandated

# TEFCA National Network

- Sequoia Project is Recognized Coordinating Entity (Melissa serves on Board of Directors)
- QHINs have been designated
- TEFCA data exchange has commenced
- Continued work to expand use cases and standard operating procedures
- Unsure how current administration will support or advance TEFCA





# HDUs: Evolution from HIEs

An HDU is a statewide or regional entity serving a specific geography:

- Guided by a diverse stakeholder governance structure
- Combine, enhance, and exchange disparate electronic health data sets
- Support treatment, care coordination, quality improvement, population health, public health, and other community purposes.

***Health data exchange is no longer just moving clinical health data.***

***HDUs build on existing technical, organizational, and trust infrastructure and can operate at both a statewide and regional level.***

# Why Community Governance?

## Nationwide Interoperability Networks & Frameworks

Progress over the last two decades points to nationwide centralization, consolidation, and an EHR-centric view of interoperability and data exchange...



## Community Governed HIE/HDU Organizations

Data governance must happen at the community level with local stakeholders, in line with state laws and local needs. These organizations can co-exist with national exchanges and frameworks.

BUT

# Common HDU Capabilities

HDUs demonstrate vast, cutting-edge capabilities to provide data-driven support for both public and private health priorities and solve some of the most pressing challenges associated with making clean, matched, and normalized data available for research, quality improvement, and programs to improve population health. Some common HDU capabilities include:



**Connectivity with Medicaid, public health agencies, and clinical care providers.**



**Data standardization and harmonization.**



**Integration and improvement of diverse and/or traditionally siloed data sources.**



**Facilitation of research and population health initiatives through a repository of quality health data.**



**Deidentification and privacy protection.**

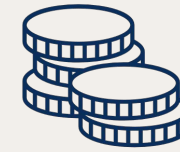
# Necessary HDU Characteristics



Neutrality and flexibility in meeting stakeholders' goals



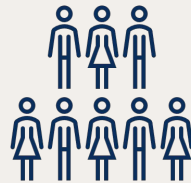
Designated Authority for specific services



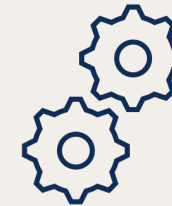
Sustainable financing



Connected region or state geography



Multi-stakeholder, cross-sector participation



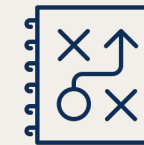
Modular infrastructure and advanced technical services



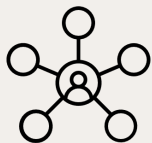
Public-private partnerships



Inclusive, transparent governance



Leverage state and local programs and data authority



Participation in national networks



# Alignment with TEFCA and National Networks

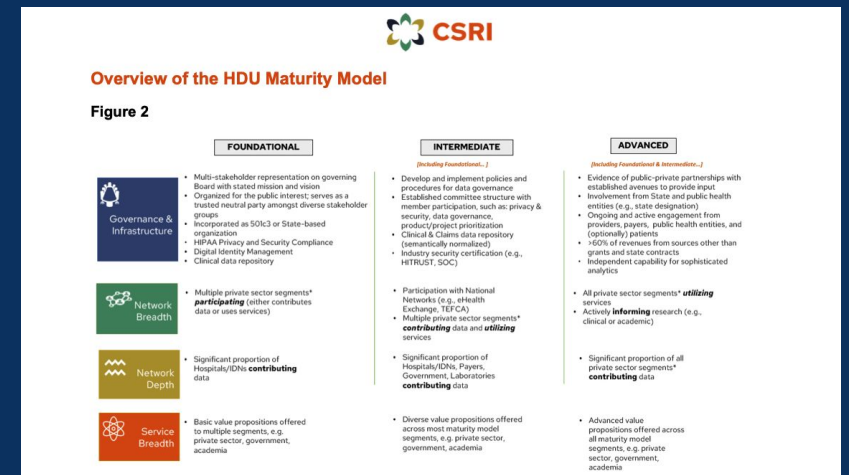
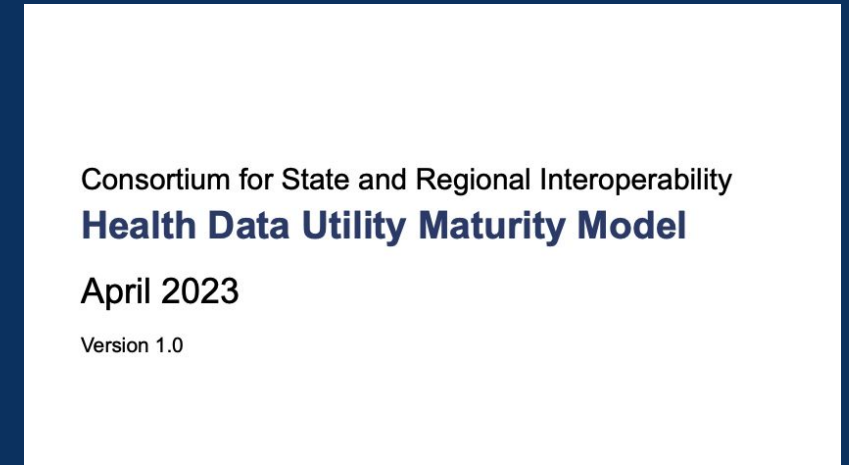
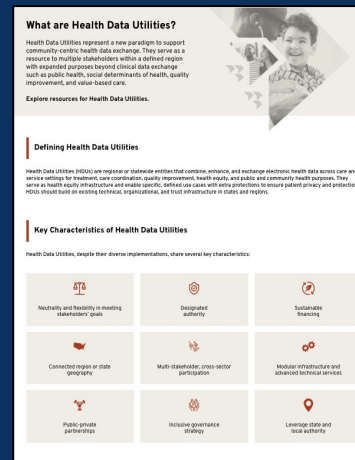
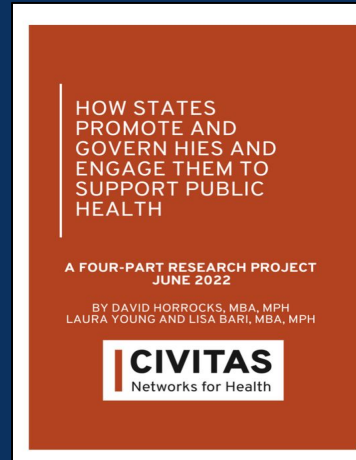
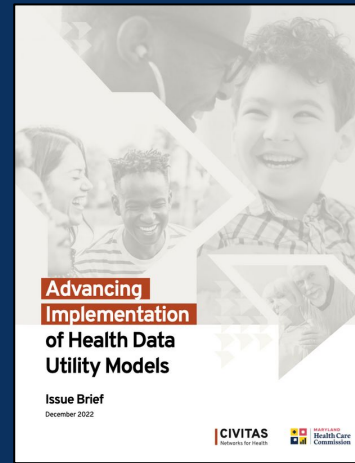
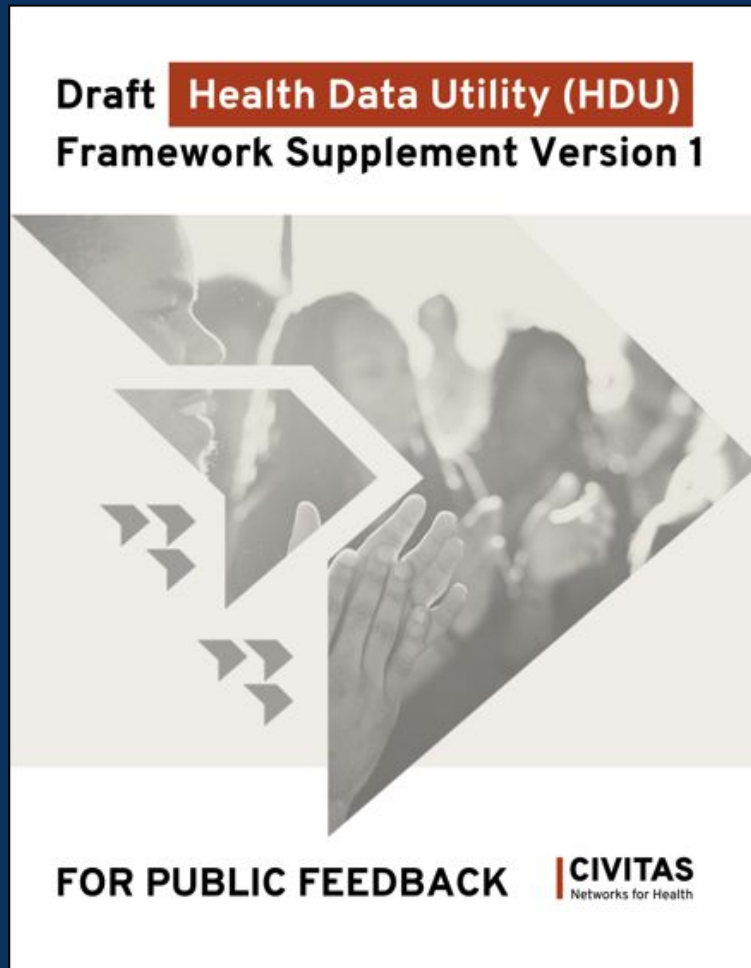
HDUs...

- Participate in national networks, including TEFCA
- Serve as trusted data stewards that have important local and state relationships and connections
- Have the potential to serve as “gateways” to national networks
- Serve as an “on-ramp” to national networks for state and local PHAs, Medicaid, and other state agencies

***Most HIEs and HDUs are already connected to national networks, and some are already connected to TEFCA.***



# HDU Resources



- Civitas resources: <https://www.civitasforhealth.org/health-data-utilities>
- CSRI resources: <https://thecsri.org/health-data-utility/>

# Value of the Contexture Statewide HIE

Robust HIE infrastructure enables critical use cases not replicable by other solutions

- Provides near real-time, actionable notifications to participants to coordinate patient care
- Enables proactive routing of data based on both patient and provider attribution via a variety of notification, results delivery, and other solutions
- Hospitals and other data senders push all patient data to the HIE in near real-time
- Supports all key HIPAA permitted purposes for accessing, transmitting, and using data
- Nonprofit organization governed by participants across the communities it serves

# National Networks – Key Limitations

National networks, including TEFCA, have key limitations that limit their value

- Not connected to many small and rural providers across the state
- Not required to respond for HIPAA use cases, except for treatment
- Not required to respond to queries from health plans or public health
- Not able to “push” proactive notifications to participants, e.g. ADTs
- Not directly accountable to and governed by the communities they serve
- Not required to reinvest in improving existing and future infrastructure
- Not able to support state-level programs and initiatives
- Not able to support consent requirements for Part 2 data exchange

Contexture as the statewide HIE supports each of these areas



## Beyond TEFCA — The Value of Contexture's Health Information Exchange

Participating in a Health Information Exchange (HIE) offers many unique advantages that aren't available through a TEFCA connection alone. Here are just some of the reasons how the Contexture HIE can reduce inefficiencies, close care gaps and improve quality of care.



### Easily access patient records

Receive the patient information you need, including comprehensive patient histories, without manual work to query and search health record systems.



### Receive data on your terms

Notifications, patient results and reports based on important patient events enable faster, real-time decision-making.



### Patient match with confidence

Improve patient care through robust identity management and patient matching functionality.



### Improve quality of care

Access data analytics through configurable dashboards to gain insights that enable improved care quality, safety and efficiency.



### Support community health

Leverage Contexture's close collaboration with state and local public health agencies to address regional health challenges, including a Social Determinants of Health program, an advance directives registry and public health reporting.



### Maintain local compliance

Feel confident sharing data through Contexture's HIE, which complies with state and local laws, including privacy protections.



### Ready to Connect?

Scan the QR code or email us at [hello@contexture.org](mailto:hello@contexture.org) to learn more.

By participating in the Contexture HIE, you're not just exchanging data—you're engaging in a powerful regional network committed to improving healthcare in your community. We hope you'll join us.

Solution	TEFCA	Contexture	Description
Query & Retrieve	✓	✓	Contexture provides de-duplicated, normalized data in a machine-ingestible format. With TEFCA, participants must request data and know who, where and what to query.
Patient History	✓	✓	Contexture provides a comprehensive patient lookback for configurable time periods, ingestible into participants' EHR (or other) systems. Under TEFCA, patient history is available to actively retrieve through a defined query.
Identity Management Services		✓	Contexture identity manages all data to ensure appropriate patient matching and reduce duplicate patient records. TEFCA requires a return of more "raw" data that is not necessarily patient matched, normalized or deduplicated.
Terminology Services		✓	Contexture augments data sets with enhanced terminology services to support mapping and downstream ingestion.
Results Delivery		✓	Contexture facilitates provider-routed pushed results, ingestible into participants' EHR systems.
Notifications		✓	Contexture provides full datasets, notifications or reports based on trigger events.
Smart Summaries		✓	Contexture provides combined, de-duplicated and normalized HL7 and CCD data for configurable time periods, ingestible into EHR systems.
Dashboards		✓	Contexture provides configurable dashboards for analytics, where data can also be downloaded and ingested.
HITRUST Security Certification		✓	Contexture maintains the gold standard of healthcare security certification.
Quality Reporting Program Support		✓	Contexture supports electronic Clinical Quality Measure program reporting.
Data Normalization Services		✓	Contexture normalizes data from various versions (e.g., HL7 v2, v3). TEFCA returns more "raw" data that is not necessarily patient matched, normalized or deduplicated.
Public Health Reporting		✓	Contexture routes reportable conditions, immunizations, newborn screenings, and registry data to public health departments for participants.
Data Warehouse		✓	Contexture maintains a comprehensive data warehouse with 10 years of patient data to respond to participant use cases.
PatientCare 360 Portal		✓	Contexture offers a provider portal for role-based longitudinal patient data access, serving all types of eligible users across the healthcare spectrum.
Health Information Service Provider		✓	As a HISP, Contexture provides direct messaging services.
Exchange of 42 CFR Part 2 Data		✓	In 2025 will provide access to Part 2 data in both Arizona and Colorado based on patients' generalized consent.
Consumer-Directed Secondary Exchange		✓	Contexture supports consumer-directed data exchange for secondary use cases such as life insurance determination.
System Capacity Tools		✓	Contexture supports capacity planning by providing real-time bed availability.



# Looking Ahead

# Contexture's Commitment



## **GROW**

EXPAND THE  
INFORMATION  
EXCHANGE NETWORK



## **RESPOND**

BUILD A DATA PLATFORM  
SUPPORTING CURRENT  
AND FUTURE INTEGRATED  
DATA AND DATA ACCESS  
NEEDS



## **LEAD**

DEVELOP A RESPONSIVE  
ORGANIZATIONAL  
STRUCTURE



# Contexture & The Evolving Interoperability Environment

**Contexture will continue to serve as Colorado's health data utility**

- We will continue to support our communities, including expansion in new and needed areas
- We will explore and support new health data utility use cases
- We will monitor and comply with federal regulations, further advancing data sharing and patient access
- We will support public health infrastructure and interoperability, as it will be a critical evolving focus in the coming years, as the nation recovers from pandemic and prepares for the future



A photograph of a classroom scene, overlaid with a semi-transparent purple filter. A female teacher with short curly hair, wearing a light-colored button-down shirt under a dark jacket, stands in the center of the room with her hands clasped. She is smiling. In the foreground, several students are seated at their desks, viewed from behind. The background features bookshelves filled with books and a world map on the wall.

# Questions?

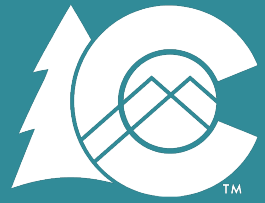


**contexture<sup>®</sup>**

Creating connections. Improving lives.



**@ContextureHIT**



OeHI

Office of eHealth Innovation

# Public Comment Period