

Working Together Towards Whole-Person Health

We are creating a system that connects people in Colorado to the information that puts them on a **clearer path to whole-person health**.

WHAT IS SHIE?

SHIE will be for **people in Colorado** who face barriers when navigating physical, behavioral, and social health care.

SHIE will be a **network of social health data, insights, and resources** that helps all people understand and access the best path to positive health outcomes.

SHIE will transform how Coloradans receive access to **affordable, quality healthcare** through the power of connection.

HOW WILL SHIE WORK?

SHIE is a model that connects the social factors that influence health with a person's physical and behavioral health care. Regardless of where a patient seeks care, they should be able to access or be referred to services that meet their physical, behavioral, and social health needs.

SHIE aims to reduce provider time spent on paperwork while also providing them with more information about their patients.

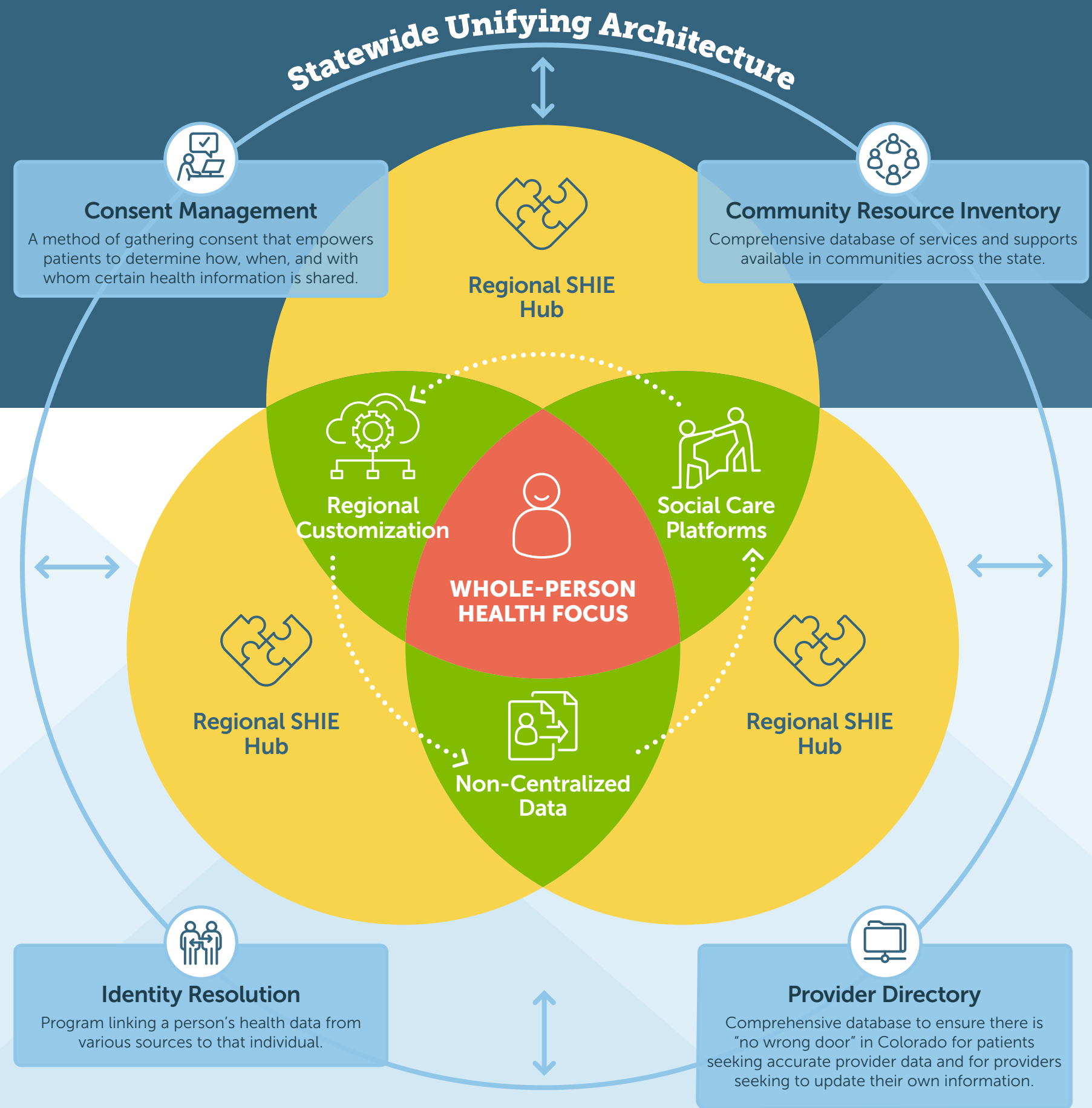
SHIE TWO PRONGED APPROACH



Build a network with a focus on interoperability and data governance, built upon existing regional successes



Fund regional infrastructure and partnerships that are customizable to the priorities of the region



GET ENGAGED

If you're interested in getting involved and learning more about SHIE, please reach out to gov_ask_oehi@state.co.us.