

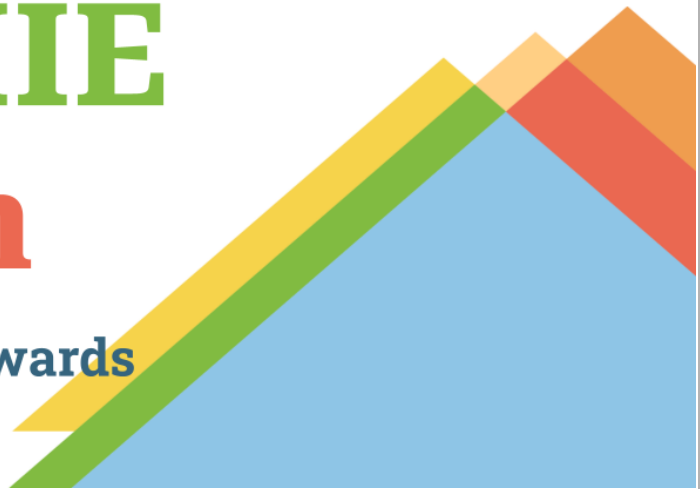


OeHI

Office of eHealth Innovation

The SHIE Bulletin

Working Together Towards
Whole Person Health



October 2023

Issue 1. Vol. 4

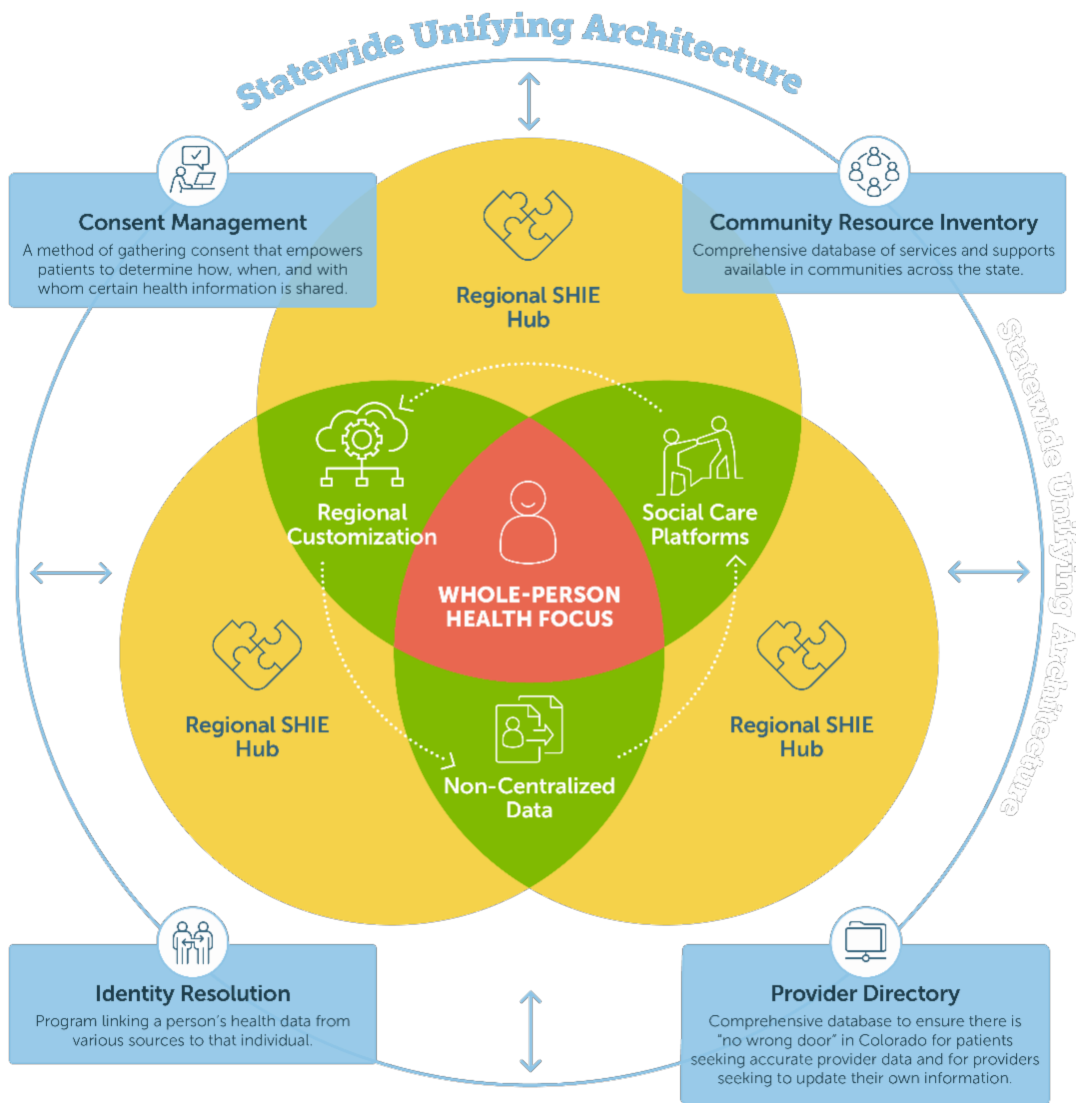
Introducing the SHIEcosystem!

Last month we announced our partnership with Resultant to develop a scalable, adaptable, and sustainable statewide social health information exchange (SHIE) architecture! This month we are introducing you to the SHIE ecosystem, or *SHIEcosystem*!

The goal of the SHIEcosystem is to make it easier for health care providers to use technology to connect people to the services they need, such as food, transportation, and safe housing, so they can thrive in their communities. This newsletter is the first part of our SHIEcosystem deep dive.

An effective SHIE requires more than just the technology infrastructure. OeHI's larger Care Coordination Initiative includes but is not limited to our SHIE work, and aims to address gaps in care coordination holistically through various solutions and partnerships. Two of OeHI's other initiatives are **Consent Management**, and **Identity Resolution**.

Consent Management, and **Identity Resolution** are critical for SHIE and effective care coordination, but also critical for many other current and future statewide initiatives. The diagram below depicts how each pillar of the SHIEcosystem works together to support whole-person health in Colorado.



Consent Management

Consent Management is a way for individuals to control who has access to their health information and how it's used. For SHIE, individuals would be able to give permission to securely share their own health data among different providers and community organizations involved in their care.

In order to have a consent management solution that is trustworthy, accessible, and understandable for all people in Colorado, OeHI's Consent Management Workgroup conducted an equity analysis and has been meeting with various vendors to understand the different technologies that could power a statewide consent solution. OeHI is also partnering with Resultant to build a consent Proof of Concept for SHIE. The Consent Management Workgroup is actively engaged in creating recommendations and requirements for this Proof of Concept.

[Learn more about OeHI's Consent Management work!](#)

Identity Resolution

As health and human service providers have become more interconnected, so too have the IT systems that support those services and providers. Many of these systems were initially designed to address specific problems and were not intended to exchange information with one another. This resulted in patients and clients having individual profiles in each system without a way to connect those profiles between the systems.



Identity resolution is the process of using information provided by an individual to identify them uniquely and accurately across multiple systems, which is critical to accurately exchange assessments and referrals within the SHIE architecture.

[Learn more about OeHI's Identity Resolution work!](#)

We Want To Hear From You!

We want to hear from **you!** From RAEs to CBOs and FQHCs to CMHCs, we want to meet with and learn from as many organizations as possible. If you or a member of your organization is interested in participating in our SHIE Discovery Sessions, **please fill out the form below!**

[Fill Out the Discovery Session Interest Form!](#)

As always, if you have questions about SHIE, please email [gov_ask_oehi@state.co.us!](mailto:gov_ask_oehi@state.co.us)

This newsletter was crafted by OeHI's SHIE team.



Want to have our newsletter sent
directly to you?

**Click here to join our
mailing list!**



Office of eHealth Innovation | <https://www.colorado.gov/oeHI>
SHIE Information | <https://oeHI.colorado.gov/SHIE>
Follow us on Twitter | @OeHI_Colorado
Follow us on LinkedIn | [Colorado Office of eHealth Innovation](#)
Email us | gov_ask_oeHI@state.co.us