

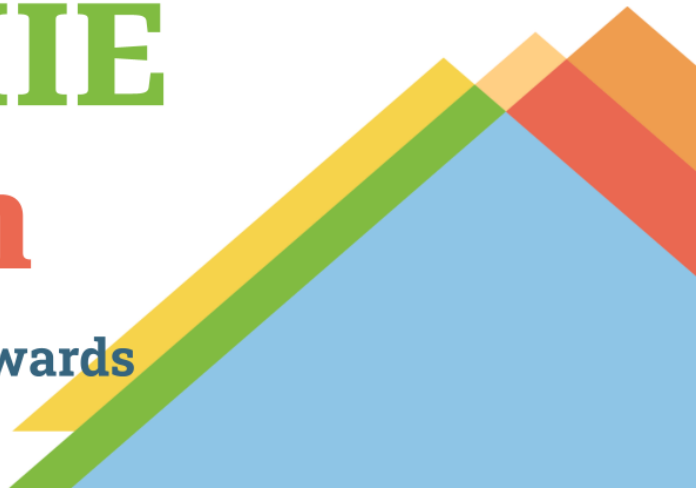


OeHI

Office of eHealth Innovation

The SHIE Bulletin

Working Together Towards
Whole Person Health



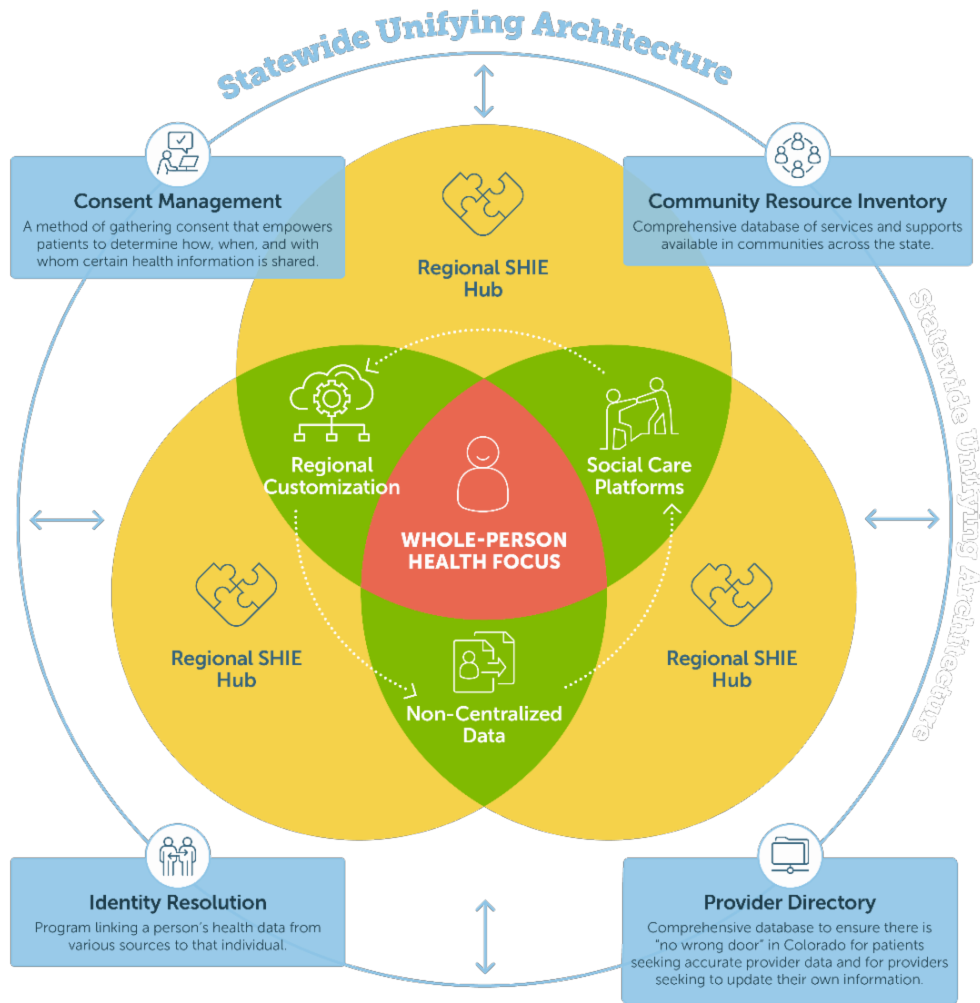
December 2023

Issue 1. Vol. 6

The SHIEcosystem...Part 2

In a previous edition of this newsletter, we introduced you to [Part 1 of the SHIE Ecosystem](#), or *SHIEcosystem*, and highlighted **Consent Management** and **Identity Resolution**. These 2 initiatives are critical for SHIE and effective care coordination, but also critical for many other current and future statewide initiatives. The goal of the SHIEcosystem is to make it easier for health care providers to use technology to connect people to the services they need, such as food, transportation, and safe housing, so they can thrive in their communities.

An effective SHIE requires more than just the technology infrastructure. OeHI's larger [Care Coordination Initiative](#) includes but is not limited to our SHIE work, and aims to address gaps in care coordination holistically through various solutions and partnerships, including through the creation of consistent **Resource Information** for providers and community-based resources. OeHI also has an **Information Governance** initiative. Accurate **Resource Information** and a clear **Information Governance** model are critical for SHIE and effective care coordination. The diagram below depicts how each pillar of the SHIEcosystem works together to support whole-person health in Colorado.



Resource Information

SHIE requires real-time access to accurate, updated **resource information**. Resource information can be information about providers (**Provider Directory**) or about community-based resources (**Community Resource Inventory**).

Provider Directory is a comprehensive suite of tools to ensure there is “no wrong door” in Colorado for patients seeking accurate provider data and for providers seeking to update their own information. A directory like this is intended to quickly and easily connect patients in Colorado with providers that meet their needs. The Behavioral Health Administration (BHA) is currently partnering with Google to build a provider-facing portal for providers to update their operational information and information on their culturally-responsive care options. This information will then be displayed, in multiple languages, to patients searching for behavioral health providers on [OwnPath](#). Long-term, this platform will expand to other provider types such as physical and social care providers.

[Click here for a one-pager about the State's provider directory strategy!](#)

Community Resource Inventory (CRI) is a database of services and supports available in communities across the state. OeHI partnered with graduate students from the CU School of Public Affairs to create a research brief on Colorado's CRI landscape and its impacts on social health information exchange.

[Click here for a research brief on Colorado's CRI landscape!](#)

Information Governance

A successful SHIE also requires a strong **governance structure**. The purpose of health information governance is to develop and implement policies, common processes, standards, and procedures to improve the accuracy and shareability of health information. SHIE needs a strong information governance model to effectively protect and securely transfer health data across the SHIE network. Stay tuned for more updates and opportunities to get involved in SHIE governance, which will be announced through future editions of this newsletter!

[Click here to learn more about OeHI's Information Governance work!](#)

See You in 2024!

The SHIE team wishes you all a joyful and restful holiday season, and a happy new year! We are looking forward to all of the progress and partnership that 2024 will bring!



As always, if you have questions about SHIE, please email gov_ask_oehi@state.co.us!

This newsletter was crafted by OeHI's SHIE team.



Want to have our newsletter sent
directly to you?

**Click here to join our
mailing list!**



OeHI

Office of eHealth Innovation

Office of eHealth Innovation | <https://www.colorado.gov/oehi>
SHIE Information | <https://oehi.colorado.gov/SHIE>
Follow us on X | @OeHI_Colorado
Follow us on LinkedIn | [Colorado Office of eHealth Innovation](#)
Email us | gov_ask_oehi@state.co.us