



OeHI

Office of eHealth Innovation

# eHealth Commission Meeting

VIRTUAL CONFERENCE

September 10, 2025

# September Agenda

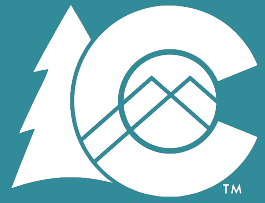


**OeHI**  
Office of eHealth Innovation

Title	Start	Duration
<b>Call to Order</b> <ul style="list-style-type: none"><li>Roll Call and Introductions</li></ul> <i>Kevin Stansbury, Chair</i>	12:00	5 mins
<b>Announcements</b> <ul style="list-style-type: none"><li>Approval of August Meeting Minutes</li><li>September Agenda and Objectives</li><li>OeHI Updates-eHealth Commission Updates</li><li>Decision Items &amp; Action Items</li></ul> <i>Stephanie Pugliese, Director, Office of eHealth Innovation (OeHI)</i> <i>eHealth Commission Members</i>	12:05	10 mins
<b>Colorado Social Health Information Exchange (CoSHIE) Updates</b> <i>Matt Arment, CoSHIE Lead, OeHI</i> <i>Melissa Gillespie, Social Determinants of Health Account Manager, OeHI</i> <i>Kimberly Taylor, CoSHIE Project Coordinator, OeHI</i>	12:15	30 mins
<b>H.R. 1 (One Big Beautiful Bill Act) Impact and Policy Updates and Discussion</b> <i>Lieutenant Governor Dianne Primavera</i> <i>eHealth Commission Members</i>	12:45	30 mins
<b>Public Comment Period</b>	12:50	5 mins
<b>Closing Items</b> <ul style="list-style-type: none"><li>Closing Remarks</li><li>Open Discussion</li><li>Recap Action Items</li><li>Adjourn Public Meeting</li></ul> <i>Kevin Stansbury, Chair</i>	12:55	5 mins

## OeHI and eHealth Commission Updates

- eHealth Commission Updates



OeHI

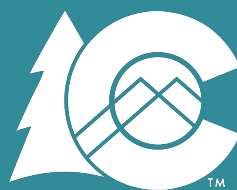
Office of eHealth Innovation

# Colorado Social Health Information Exchange (CoSHIE) Updates

Matt Arment, CoSHIE Lead, OeHI

Melissa Gillespie, Social Determinants of Health Account Manager, OeHI

Kimberly Taylor, CoSHIE Project Coordinator, OeHI



OeHI

Office of eHealth Innovation

# Transforming Social Care in Colorado:

The Colorado Social Health Information Exchange (CoSHIE)



# CoSHIE

Colorado Social Health Information Exchange

- 10 year project
- Run by the Colorado Office of eHealth Innovation (OeHI) in partnership with the Colorado Department of Health Care Policy and Financing (HCPF)
- Part of the Medicaid Enterprise System and owned by HCPF



What problems is the  
CoSHIE trying to solve?

# What problems is CoSHIE trying to solve?

## Unmet social needs impact whole person health

- Factors like affordable housing, safe transportation, and the built environment have twice as much of an impact on a person's well-being as clinical care

## Current social care delivery is fragmented

- Data systems are siloed and providers rarely have the information they need in one system to make informed decisions about a client's holistic health

## The burden of social care today lies on the person

- People have to recall traumatic experiences repeatedly, coordinate their own care, and repeat information to multiple providers
- Providers might issue duplicative referrals or unknowingly send clients on a wild goose chase





# Our Vision for CoSHIE

## Two-Pronged Approach:

### Statewide Unifying Architecture

- Build a network with a focus on interoperability and data governance, built upon existing regional successes - Contract with Resultant executed 11/14/2023

### Regional Proofs of Concept

- Fund regional infrastructure and partnerships that are customizable to the priorities of the region - Contracts executed July 2025



- **Community Connections**
  - Building Community Partnerships to Support Individuals with Disabilities
- **Boulder County**
  - Building Community Partnerships to Support Individuals with Disabilities
- **Northwest Colorado Community Health Partnership**
  - Reducing Barriers to Care for Individuals Navigating Substance Use Disorder
- **Adams County**
  - Reconnecting Individuals Exiting Incarceration to their Communities

- The goal of the CoSHIE Proof of Concept (PoC) Projects is to demonstrate how existing systems can connect bi-directionally with CoSHIE for social determinants of health (SDoH) data exchange and strengthen closed-loop referral capabilities.
- These projects aim to provide lessons learned, enabling future organizations to integrate seamlessly into the CoSHIE ecosystem.





Where We *Are* &  
Where We're *Going*

## Completed in 2024

- Core architecture development
- Accelerating Home & Community Based Services transitions referrals
- Pilot to ingest 211 community resource inventory (CRI) data into CoSHIE
- Regional Proof of Concept awardees selected

## Completed Q1-Q3 2025

- Data normalization pilot between 211 community resource inventory (CRI) and an external partner
- Signed contracts with all PoCs
- Completed 3 of 4 PoC project kickoff meetings
- Sharing member's housing voucher status with their care team

## DOLA Elite Integration to CoSHIE

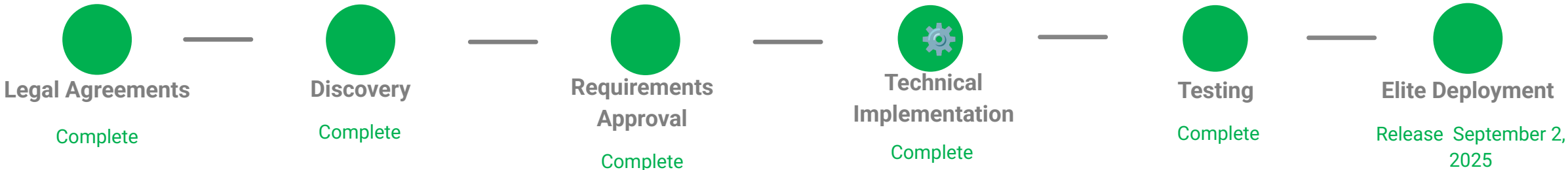
### Executive Summary

The DOLA Elite to Regional Accountable Entities (RAEs) integration represents a step toward modernizing housing and healthcare coordination in Colorado. This use case will establish automated data sharing between DOLA's Elite housing management system and Colorado RAEs, enabling care coordinators to access housing voucher information for their Medicaid clients. The integration supports over 20,000 housing records across seven voucher programs with twice-daily data updates. We are currently in the technical setup phase, working through production environment access and query optimization challenges with a target go-live of August 26, 2025.

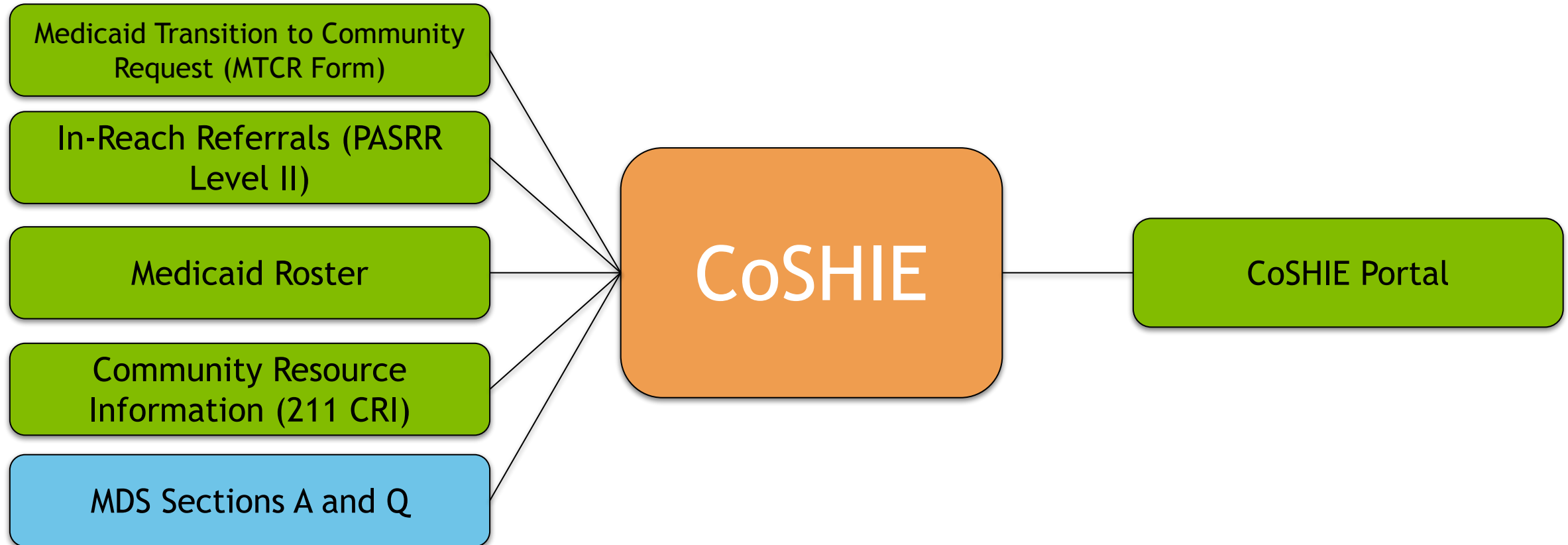
### Business Impact

This integration will transform how care coordinators access housing information for their clients. Currently, care coordinators must manually request housing status updates through email exchanges with DOLA, creating delays and potential service gaps. The automated data sharing will enable visibility into housing voucher status, waitlist positions, and key milestone dates, allowing coordinators to provide more timely and effective support to clients navigating the housing process.

RAEs will receive data updates covering over 20,000 housing records across seven voucher programs, eliminating redundant service provision and enabling proactive intervention when clients face housing challenges. The integration supports DOLA's goal to reduce administrative burden while improving coordination across the housing and healthcare ecosystem.

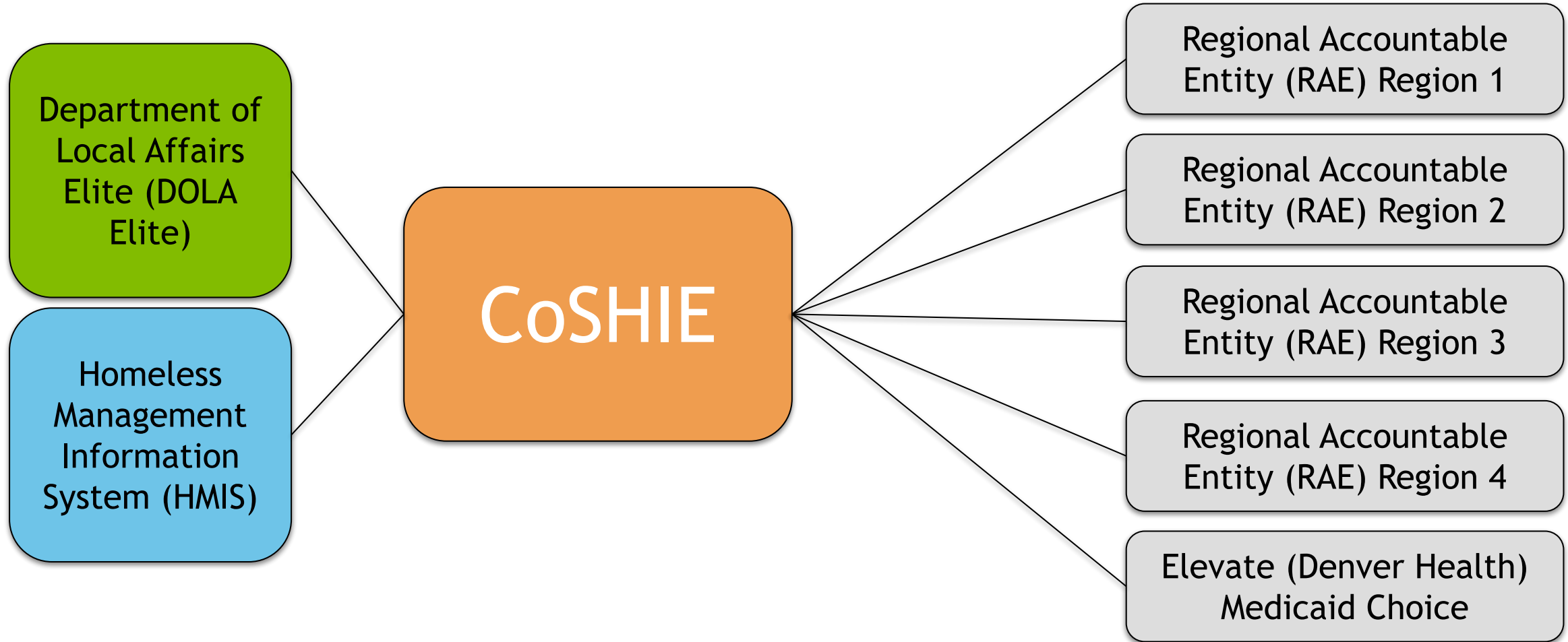


## Accelerating Home & Community Based Services transitions referrals

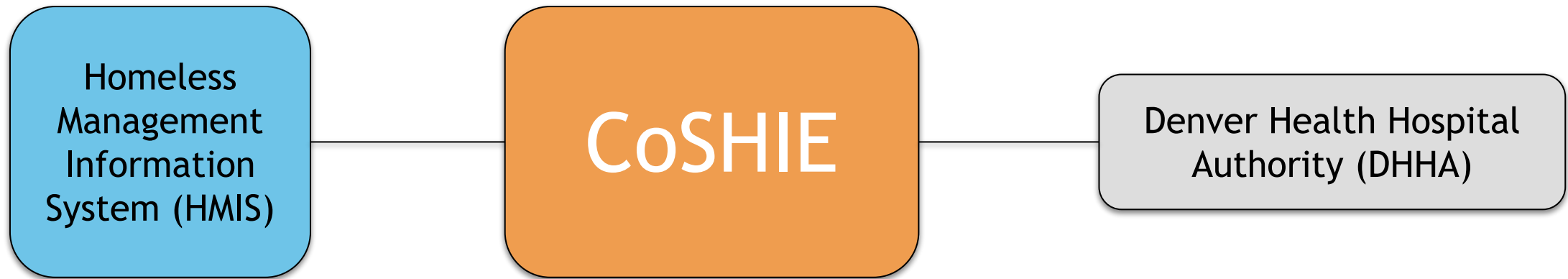




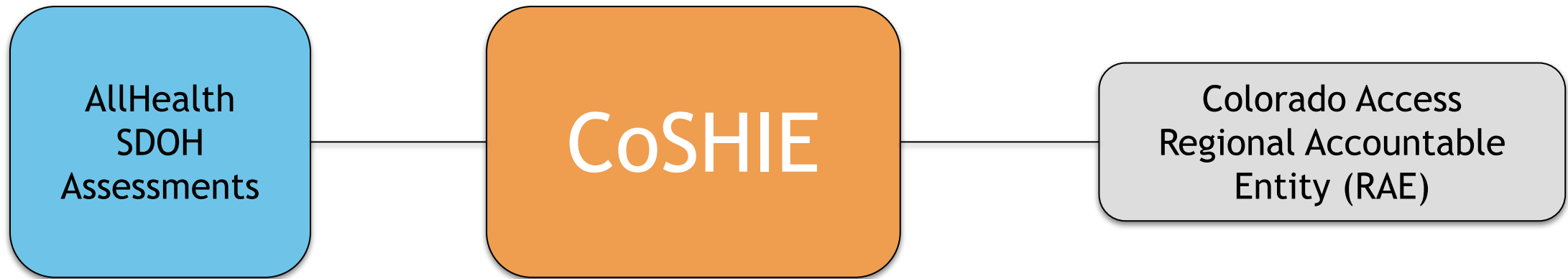
## Connecting individuals to safe, affordable housing



## Connecting individuals to safe, affordable housing



## Sharing of SDOH Assessments



**Legend**



Planned



In Progress



Complete



Questions?



OeHI

Office of eHealth Innovation

# Resources

- [OeHI Care Coordination Website](#)
- [OeHI CoSHIE Website](#)
  - [CoSHIE Statewide Unifying Architecture Web Page](#)
  - [Regional CoSHIE Proof of Concept Web Page](#)



OeHI

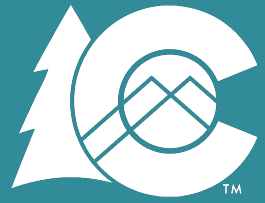
Office of eHealth Innovation

# Thank you!

Please reach out any time!

Melissa Gillespie, CoSHIE Lead, [melissa.gillespie@state.co.us](mailto:melissa.gillespie@state.co.us)

<https://oehi.colorado.gov/>

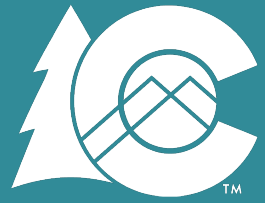


OeHI

Office of eHealth Innovation

# H.R. 1 (One Big Beautiful Bill Act) Impact and Policy Updates and Discussion

Lieutenant Governor Dianne Primavera  
eHealth Commission Members



OeHI

Office of eHealth Innovation

# Public Comment Period





OeHI

Office of eHealth Innovation

# Closing Remarks