



OeHI
Office of eHealth Innovation

EHEALTH COMMISSION MEETING

SEPTEMBER 12, 2018

SEPTEMBER AGENDA



<p>Call to Order Roll Call and Introductions Approval of August Minutes September Agenda and Objectives <i>Michelle Mills, Chair</i></p>	<p>12:00</p>
<p>Announcements OeHI Updates Updates, Grant Opportunities, Workgroup Updates, Announcements, Action Items <i>Mary Anne Leach, Director, Office of eHealth Innovation</i> <i>Carrie Paykoc, State Health IT Coordinator</i> <i>Commission Members</i></p>	<p>12:05</p>
<p>New Business</p>	
<p>Master Provider Directory <i>Steve Holloway, Branch Chief, Prevention Services Division: Health Equity and Access, CDPHE</i></p>	<p>12:15</p>
<p>Funding Philosophy <i>Mary Anne Leach, Director, Office of eHealth Innovation</i></p>	<p>12:55</p>
<p>Care Coordination and SDOH-HIE: Continued Discussion <i>Lauren Ambrozic, Executive Director, Colorado Prevention Alliance, Rachel Hutson, Director, Children and Youth Branch at CDPHE</i> <i>Cara Bradbury, Program Officer, Zoma Foundation</i></p>	<p>1:10</p>
<p>Remaining Commission Comments</p>	<p>1:40</p>
<p>Public Comment Period</p>	<p>1:50</p>
<p>Closing Remarks Open Discussion Recap Action Items October Agenda Adjourn <i>Michelle Mills, Co-Chair</i></p>	<p>1:55</p>

OeHI UPDATES

- Budget Update
- SHEIC Update
- Care Coordination WG Update
- [HIE WG Survey Request](#)

COMMISSION UPDATES

- Quality Health Network Summit- Marc Lassaux
- Data Summit Nov 8th- Jon Gottsegen
- Others?

Action Item	Owner	Timeframe	Status
Update quorum bylaws	OeHI Director	Feb 2018	Pending best practices
Track and report federal and local legislation	OeHI Director/ State Health IT Coordinator	2018	Ongoing
Letter to Lab Corps and Quest	OeHI Director/ Govs Office/ Morgan	2017	In progress



OeHI

Office of eHealth Innovation

MASTER PROVIDER DIRECTORY

*STEVE HOLLOWAY, BRANCH CHIEF, PREVENTION SERVICES
DIVISION: HEALTH EQUITY AND ACCESS, CDPHE*

Advancing Colorado's Provider Directory Colorado Health IT Roadmap Funding Request

Costs and scheduling for enhancements to
Primary Care Office's (PCO) Workforce Database

Steve Holloway, Branch Chief

Short Definition of an API

An Application Programming Interface (API) is software that automates and securely manages data exchange between two or more trusted and verified software applications.

Workplan for an API in the PCO Workforce Database

- Development of an API is not scheduled or financed for FY '18 within the current project scope.
- An API could produce benefits to data partners and the state provider directory by assuring more efficient and controlled exchange of provider data.
- If the eHealth Commission were interested in accelerating the development of an API in the PCO workforce database, financing could be offered to amend the current developer contract and accelerate development within the current fiscal year.

Development Costs for and API in the PCO database this Fiscal Year

- Development of two endpoints (6 weeks)
Includes custom XML interface and HL7 2.51 (or other if discovered during design consultation). **\$39,600**
- SQL development for queries (2 weeks) **\$11,040**
- Integration testing (2 weeks) **\$13,200**
- New real time DB configuration (2 days) **\$2,640**

Total Development Costs \$66,480

Deliverable and Sustainability

- Final deliverable will be a real time end point that will be exposed to trusted data partners including the administrator of the Master Provider Directory. The endpoint can be consumed as a webservice or HL7 endpoint via a VPN tunnel to the Microsoft AZURE environment hosted by the PCO.
- Ongoing AZURE server costs to support API data transfers will be approximately **\$12,000 per year.**

Value Proposition of an API in support of a state Provider Directory

- The addition of an API to the PCO workforce database allows trusted partners and the administrator of the Master Provider Directory to efficiently leverage the work already completed by the PCO.
- Data transfers can be made real time and on demand with little or no administrator effort among platforms, which lowers overall costs.
- An API from the workforce database allows for the shortest time frame to implement a Master Provider Directory because the MPD will benefit from existing state resources invested in the PCO workforce database.

eHealth Commission Ask

- Does the Commission want to support applying Roadmap funding for an API to integrate the PCO's workforce database into the state Provider Directory?
- How else could the Roadmap advance this effort? HIE Integration?
- Are there other considerations?



OeHI

Office of eHealth Innovation

FUNDING PHILOSOPHY

MARY ANNE LEACH, DIRECTOR, OFFICE OF EHEALTH INNOVATION



OeHI

Office of eHealth Innovation

SOCIAL HEALTH INFORMATION EXCHANGE - CONTINUED DISCUSSION

*LAUREN AMBROZIC, EXECUTIVE DIRECTOR, COLORADO PREVENTION
ALLIANCE*

CARA BRADBURY, PROGRAM OFFICER, ZOMA FOUNDATION

*RACHEL HUTSON, DIRECTOR, CHILDREN AND YOUTH BRANCH AT
CDPHE*

Social-Health Information Exchange

eHealth Commission Meeting Sept 12, 2018

Lauren Ambrozic, Colorado Prevention Alliance
Cara Bradbury, ZOMA Foundation
Rachel Hutson, CDPHE



The USE Case

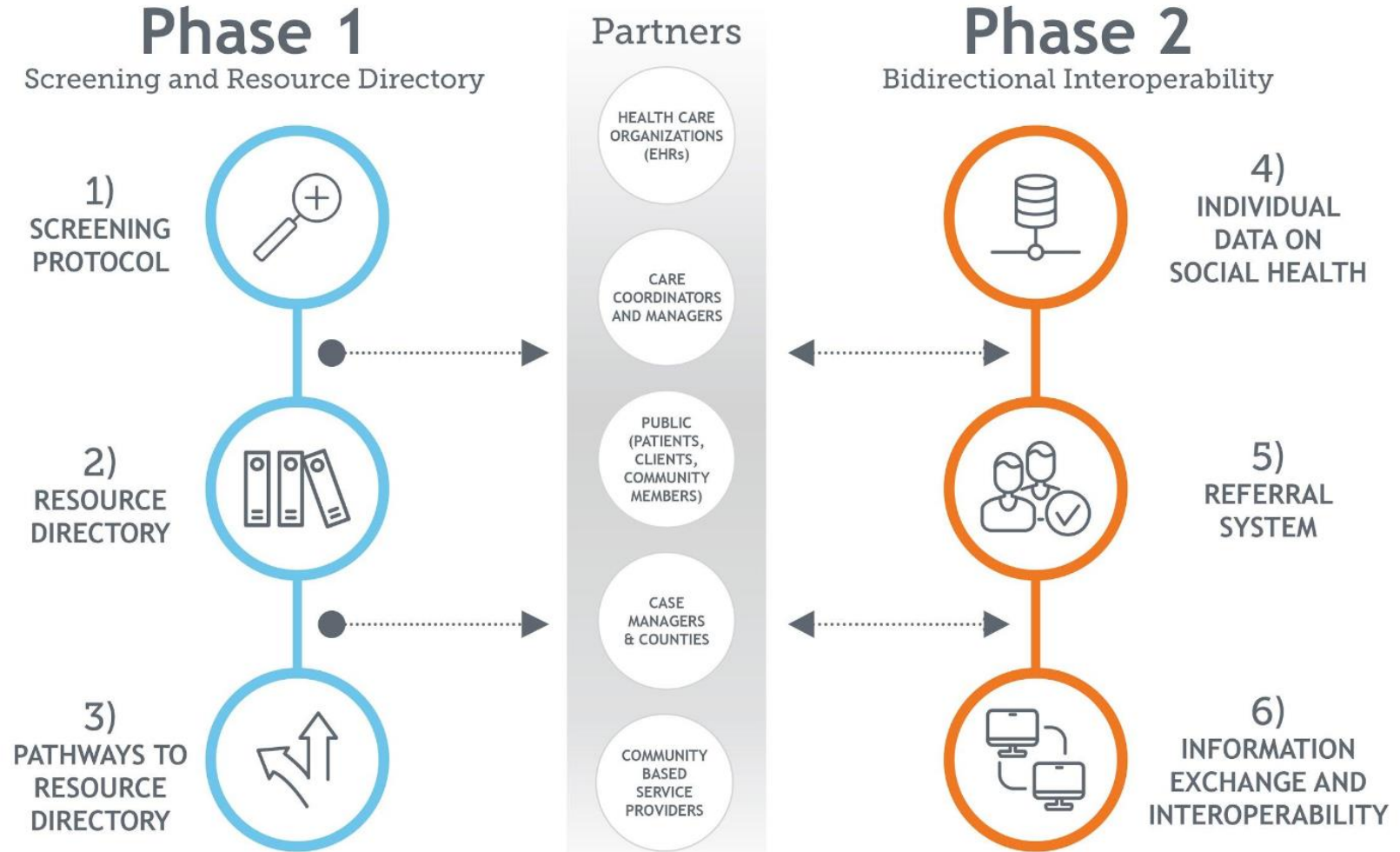
An interoperable and customizable infrastructure that allows multiple entities to screen and assess the SDoH needs of individuals and families, refer to non-medical resources, and confirm whether services are accessed

IDENTIFICATION
AND ASSESSMENT

REFER AND
CONNECT

CONFIRM AND
EVALUATE

Social-Health Information Exchange



The **OFFER** *and the* **ASK**

- Public and private funding opportunities
- Alignment of effort across sectors
- Governance and standards
- Technological expertise
- Readiness for action

Reflections from August Discussion

- White paper and 6-component framework conceptually resonated with the Commission
- A social-health information exchange is one of the goals of the Commission
- Colorado's social-health information exchange should build upon the HIE infrastructure
- Public and private funding is needed to support architecture, build capacity and develop governance standards

Proposed next steps

- Refine and adopt the white paper as a guiding document for the Commission and work of the Care Coordination Work Group
- Include someone who helped draft the white paper on the Care Coordination Workgroup
- Create short-term subgroup to help draft a funding plan to leverage public and private dollars to support components of the social-health information exchange

Contact Information

- **Lauren Ambrozic**
Colorado Prevention Alliance,
Lauren@coloradopreventionalliance.org, 303.249.7467
- **Cara Bradbury**
ZOMA Foundation
cbradbury@zomafoundation.com, 385.215.5249
- **Rachel Hutson**
Colorado Department of Public Health and Environment
rachel.hutson@state.co.us, 303.692.2365



CREATIVE

STAY TOGETHER

MARKETING

A1-BP-



OeHI

Office of eHealth Innovation

CLOSING REMARKS, OCTOBER AGENDA, AND ADJOURN

MICHELLE MILLS, CHAIR